



BVH Altenbergerstraße

Data and facts

Company

Type Pipeline construction

Runtime 11.2017 - 12.2017

Principal Erste ÖSW Wohnbauträger GmbH

[Project report online](#)

www.porr-group.com



Utility lines in circulating traffic.

Scope of services in detail:

Reinforced concrete/ovoid profile DN1200/1800 laid: 150m approx.

Total excavated volume: 2,000m³ approx.

Gravel 4/8mm: 600m³ approx.

Invert concrete, reinforced: 100m³ approx.

Impressions

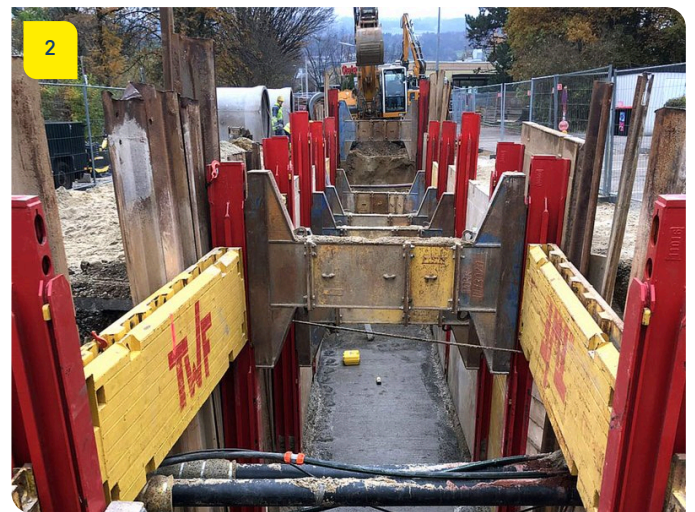


Image notes

1

Completed in six weeks.

The PORR team completed all the earthworks, pipe-laying and master builder work in a construction period of a mere six weeks, winning the full satisfaction of the client.

2

Continuously adjustable.

One of the major advantages of the giant slide rails: they can be adjusted to the exact height of the pipe culverts.

Do you have questions about the project or would you like to learn more? Feel free to contact us for further information.

PORR AG Group Communications

Absberggasse 47

1100 Wien

T +43 50 626-0

E-Mail: comms@porr-group.com