



# Reininghaus Q1 - Lot 01

## Green Tower

### Data and facts

Company	PORR GmbH & Co. KGaA, ARGE Lederer
Type	Residential construction, High-rise construction, General contractor services
Runtime	01.2021 - 07.2023
Principal	ENW Gemeinn. Wohnungsges.m.b.H.

[Project report online](#)

[www.porr-group.com](http://www.porr-group.com)

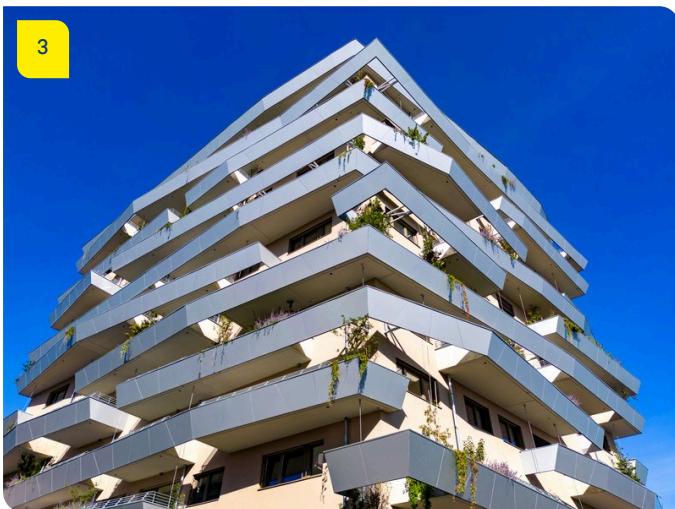
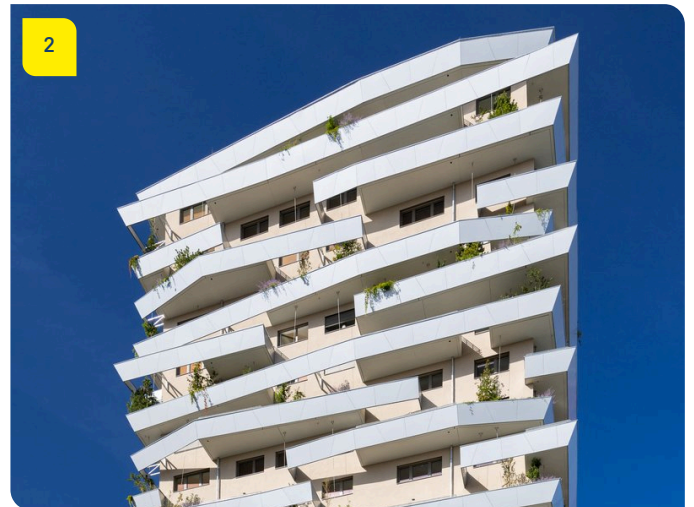


# Living in the Green Tower at Reininghausgründe

The 20-storey multifunctional tower (BT01) combines living, working and leisure under one roof – a forward-looking project that harmoniously combines functionality, design and sustainability. The construction project also includes a two-storey underground car park (BT21) with space for 335 vehicles and 24 additional outdoor parking spaces. This ensures an optimal mobility infrastructure. The lower floors of the Green Tower are dedicated to the public: attractive commercial space is being created here for a local supplier, a café, a primary care centre and modern office units. From the third floor upwards, 138 apartments – up to the exclusive penthouse floor on the 20th floor – offer urban living comfort of the highest standard.

The individually designed, green balconies are an architectural highlight. Each one is unique and contributes to the striking appearance of the building and its ecological quality. The project also sets standards in terms of energy efficiency: heating is provided by sustainable local heat from an adjacent steelworks, while a former groundwater well belonging to the Reininghaus brewery is used to cool the building. The result is an innovative overall concept that combines resource-saving technologies with modern architecture. With the Green Tower Reininghausgründe, PORR is creating a liveable, sustainable place – a symbol of sustainable construction and urban living in Graz.

## Impressions





# Image notes

1

## Modern architecture meets urban nature

A high-rise building that combines clean lines with nature – a symbol of sustainable construction in urban areas.

3

## Urban gardening at new heights

The unique balconies create space for individual greening and characterise the distinctive appearance of the Green Tower.

2

## Living in a green lighthouse

The Green Tower Reininghausgründe impresses with its striking silhouette and green balconies, combining urban living with sustainable architecture.

Do you have questions about the project or would you like to learn more? Feel free to contact us for further information.

## PORR AG Group Communications

Absberggasse 47

1100 Wien

T +43 50 626-0

E-Mail: [comms@porr-group.com](mailto:comms@porr-group.com)