



# Hollenburg Private Hospital

## Data and facts

<b>Company</b>	PORR Bau GmbH
<b>Type</b>	Healthcare facilities
<b>Runtime</b>	11.2010 - 11.2011
<b>Principal</b>	Sanlas Holding GmbH

[Project report online](#)

[www.porr-group.com](http://www.porr-group.com)

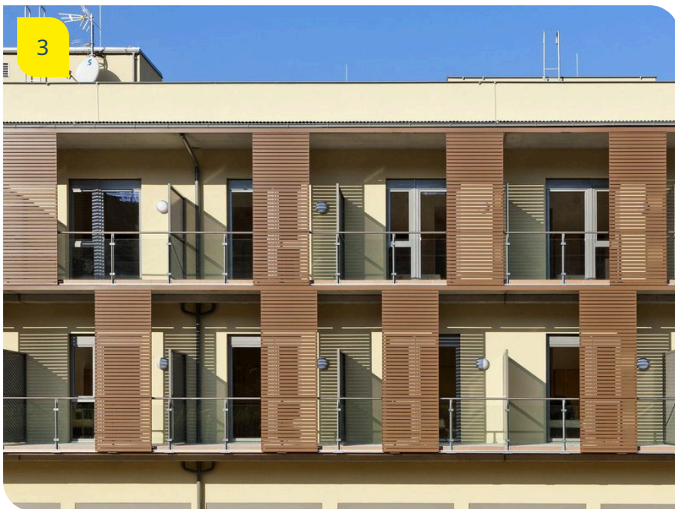


# Building a hospital in the middle of the vineyards

## Execution.

- approx. 12,700m<sup>2</sup> gross floor area
- Concrete construction with a low percentage of brick walls
- Use of precast concrete elements such as pre-fabricated ceilings, hollow-core slabs, cavity walls and installation blocks due to tight construction schedule
- Some 8,400m<sup>3</sup> total concrete volume
- 751 t of reinforcements

## Impressions



## Image notes

1

Hollenburg Private Hospital.

2

Hollenburg Private Hospital.

The idyllically situated private hospital for psychological rehabilitation

Open and merging with the landscape, the underground car park offers 70 parking spaces. Two outside parking levels offer 94 parking spaces.

3

**Hollenburg Private Hospital.**

The private hospital is able to accommodate some 120 patients.

Do you have questions about the project or would you like to learn more? Feel free to contact us for further information.

**PORR AG Group Communications**

Absberggasse 47

1100 Wien

**T** +43 50 626-0

**E-Mail:** [comms@porr-group.com](mailto:comms@porr-group.com)