



Rudolfsheim Residential Care Home

Data and facts

Company	PORR Bau GmbH Niederlassung Hochbau Wien/ Neubau 2 und Großprojekte/ Hochbau
----------------	---

Type	Healthcare facilities
-------------	-----------------------

Runtime	06.2013 - 06.2015
----------------	-------------------

Principal	Gesiba Gemeinnützige Siedlungs u. Bau AG
------------------	--

[Project report online](#)

www.porr-group.com



The old and the young under one roof

After structural work had been completed after some nine months of construction time, just ten months were left for finishes. More than 32,000m² of gross floor area were virtually completed in just 19 months of construction to allow for multiple inspection bodies to start with the technical certification of the facilities relevant to safety and hygiene. After this phase, a contractually agreed six-week trial operation was started three months prior to handover and completed on schedule.

Ground area: 13,700m²

Built-up area: 7,830m²

Gross floor area: 32,500m²

Residential care home floor space: 28,700m²

Kindergarten floor space: 1,100m²

Outside facilities: 6,300m²

Impressions

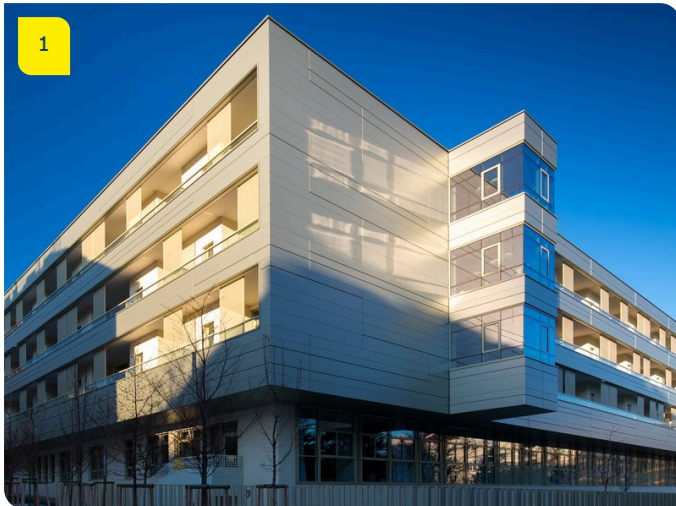


Image notes

1

Rudolfshheim Residential Care Home

The street-side facades were mostly designed using metal with an irregular joint structure.

2

Rudolfshheim Residential Care Home

The spacious courtyards are true oases of tranquillity.

Do you have questions about the project or would you like to learn more? Feel free to contact us for further information.

PORR AG Group Communications

Absberggasse 47

1100 Wien

T +43 50 626-0

E-Mail: comms@porr-group.com