

# PORR

HOME OF  
CONSTRUCTION

# TO BUILD A BE

**EUR 8.5 BN**

Top order backlog

**EUR 6.7 BN**

Solid production output

# Better World

## 7 HOME MARKETS

Clear focus on Europe

## AROUND 21,000

Staff members from over 80 countries

A09 IN Deutschfeistritz - Übelbach A1 Asphaltierung Aurachbrücke A10 Reittunnel Eben A26 Linzer Autobahn, Etappe 1 A5 FDE  
Neubau SPAR Obervellach Altlast S23 Flughafen Salzburg AMS Osram Apartmenthaus „das Walde“ ARBÖ Zentrale Salzburg AL  
ÖBB Ebreichsdorf ARGE ÖBB Hadersdorf ARGE Panattoni ARGE Q2 Parkdeck ARGE S16 Arlberg tunnel ARGE S7 Heiligenkreuz  
Anschluss Gewerbegebiet Porsche Aufschließung St. Oswald Ausbau Deponie Rottner Ausbau Fernwärme Seeboden Ausbau ur  
Sanierung Ennsbrücke B311 Schönraingrabenbrücke B36 Umfahrung Großglobnitz B6 Umfahrungsstraße Harmannsdorf B95 L  
trum Illmitz Betriebsgebäude HÖS Anthering Betriebsgebäude Wallner & Neubert Betriebs-u.Bürogeb.Sonepar BG Muthgasse 1  
Villach BMW Gebäude 63.5 BMW Neubau Nordspange BMW Portal West Brücke B12 - Leiblach Lindau Brücke Drammen Büro  
Campingplatz Riegersburg Campus Krems Chalets Fender Stubeck Chemiepark Linz Container Terminal Constanta Dach-ARGE  
2022 Deponie Kettlasbrunn Deponie B - VA01 Deponie Leopoldsdorf Abschnitt 1+2 Deponie Sollenau Deponie St. Kosmas Depor  
Erdarbeiten JKU-House of School Erdberger Steg Erneuerung Bosrucktunnel Modul 2 Erneuerung Klinikum Trostberg Eternitfas  
straße Fassbinderei Schneckenleitner Festspielhaus Bauetappe 3, Bregenz FF Koralmtunnel KAT 50.6.1 FIH Brumowski Langer  
Fuhrpark Rodund Garage Moser Lieserhofen Garage Rudersdorf Garagenkönig Krems Neubau Gemeindezentrum Neudorf Geme  
Geothermie Seestadt Sedlak PrimeoMED Geothermie Sportarena Geothermie St. Gotthard in Wien Geothermie Village im Dritten  
brücke Greinerbrücke Kremsmünster Güterterminal Werndorf Betonbau GWS Feldkirchen Hafenportal Linz Halle Poscharnegg H  
Moabit Heizkraftwerk Siezenheim Heizwerk Alpendorf Heizwerk Eisenstadt Heizwerk Granitzer Lieserbrücke Heizwerk Hinters  
Hirschen Humanomed Privatklinik Villach Infineon Ausbau Geb. 38 Infineon Energiezentrale Halle 13 INQuartier Ingolstadt Intern  
sade Internat Stoob KIKA Parkplatz Eugendorf Kindergarten Markt Hartmannsdorf Kindergarten Neudörfel Kindergarten Schatten  
Töging am Inn L25 Moosergraben-/Mellitzgrabengalerie Lagerhaus Jörgen Lagerplatz Werkhof Hohenems Landgewinnung Haf  
S37 Markplatz Schöllnach Marktplatzneugestaltung Semriach MCI Campus Generalplanung Mehrfamilienwohnhaus Mayer MGC  
zentrum Neutal Neckarbrücke Horb Neubau Biomasseheizkraftwerk Siezenheim Neubau Grebenzenlodges St. Lambrecht Neub  
müllerbrücke Neubau Stellwerk ÖBB Rottenmann Neubau Wohngebäude St. Oswald Neue Mittelschule Hallein Neugestaltung Be  
dorf 5 ÖBB Ersatzstraße Weng/Köstendorf ÖBB Suben-Gopperding ÖBB Türkenschantztunnel ÖBB Viadukt Kalte Rinne ÖBB  
Sportcenter Knitel Warth Parkplatz Sonnenapotheke Parkplatzherstellung Schwechat Parkstadt Center Schwabing Pflegeheim F  
Pumpstation Pfraundorf Q-Tower -The Marks r&r Betriebsgebäude Graz Railway Rehabilitation Povdiv - Krumovo Red Bull Elsbett  
anlage Ursulinenweg Reininghaus Containerschule AHS Reininghaus Q1 Reininghaus Q4a Remsbach Brücke Rohrleitung K05  
Baulos 5-7 S7 Fürstenfelder Schnellstraße BL2 + BL3 S7 Tunnel Rudersdorf Sagbrücke bei Achenkirch Salzachsteg Schwarzach  
Bestandsgebäude und Zubau der WKÖ Linz Sanierung BRG Petersgasse Sanierung Hallenbad Murau Sanierung Kierlingbachbr  
Datahouse Sillbrücke Smart City Nord Smart Tower, Stick und Parside Speicher Keesboden Speicher Schermer Hochgurgl Sp  
Matrei Sportanlage Premstätten Stadtstraße Aspern Stahlwerkschlacke Erzberg Straßenbau Premstätten Straßenbau Schmalz  
Precht Werfen Stützmauer Föhringer Ring Stützmauer Höhenstraße Innsbruck Technikgebäude Franz-Josefs-Bahnhof Technolo  
Grünbrücke A8 Trinkwasserkleinkraftwerk Reute Umbau BSZ Spittal Umbau Cineplexx SCS Umbau Gipfelhaus Gerlitzten Umb  
Kittsee Umbau Strandbad Ertl Seeboden Umbau the Lords Herrengasse Umbau Volksschule Rum Langer Graben Umfahrung V  
gebäude VIO Plaza Volksschule Neudorf Vorschubschnabel Amand WEG 997 Tiefgarage Baldham WHA Frauenkirchen, Franz  
Wohnanlage Karl-Truppe-St. Viktring Wohnanlage Sternhofweg „Stern 12“ Wohnbau Berresgasse BP E+G Wohnbau Green 21 V  
Wohnhaus Rupnik Lendorf Wohnhaus Sarnitz Wohnhausanlage Derfflingerstraße in Linz Wohnhausanlage Fedlgasse Eisenstad  
Keplerweg in Grieskirchen Wohnhausanlage Kirtagwiese in Altmünster Wohnhausanlage LAX Wohnhausanlage Podhagskygas  
Ferdinand Wohnhausanlage Almerbergstraße 4 Wohnprogramm Rote Burg WVB Großraum Ansfelden Zubau Privatklinik Radeg  
lienhaus Zaugg Andermatt Brücke Wirüti + Gütsch Halle Für Parking/Schattdorf Schutzmassnahmen Sparen Weggis Rorbachtu  
Muotathal K23 Isenthalerstrasse SBB Stützbauwerk Sanierung Stall Aueli Lauerz Anbau Mettler TorSüd Wohnhaus Aport Muc  
Turm - Knoten Arth Seehotel Adler Arth Mehrfamilienhaus Bergstraße Anbau Werk- & Lagerhalle Ried ARGE H53 Brenner Basis  
port Rail - MRB Pa Dacharge Erneuerung Fachinger Tunnel Dacharge Erneuerung Cramberger Tunnel Arge Tunnel Fachingen Ar  
Build Sibiu SP4 SLT Gradistea Bridge Drammen Bybrua LG3 LK 274 Trzcinsko Tunnel Stollenanlage Perneck LG1 - Supervision S  
Koziny Renovierung ICW Szturmowa Lakeside Finnische Botschaft in Warschau Stryków Sarinz Poznan Sniadeckich Legionow  
nierów Przydrozna Baza Cumownicza Szczecin Torun-Chelmza LK207 Szczecin Celnia Lidzbark Warminski DW513 Gdansk Jas  
Tatrzenska LOT A Chorzów LK131 Opole Stadion Bochnia Bolarus Zakopane Sosnica Piasta Kolodzieja V S1 Oswiecim Krakow  
Szturmowa Warszawa Lublin ul. Jasna Olsztyn, S51 Augustów, Dorn Turka II Linia Metra - Mory Warszawa, ul. Gagarina Warsza  
sznowola-Tarczyn Kimball Produktionsgebäude Park Zachodni Simulationszentrum WUM Boronow Öltanks Oknoplast ASP-1 Br  
Militärflughafen Lask The Form DCO Wroclaw Railway flyovers S1 Oswiecim - Dankowice Umfahrung Wloszczowa SAP Ariba CM  
ARGE VD Jezeri ARGE PC 20 Modernisierung ARGE Cista u Rakovnika ARGE COV Koci ARGE Dolni Lutyne ARGE D35, MUK Da  
Nove Hradky Brücke Brückensanierung Nova Ves Revitalisierung Milovice TESLA Hloubetín Transportterminal Jihlava D1 - Brück  
caplast Breclav Wohnhausanlage Kasperske Hory Industriehalle L&R Slavkov Wohnhausanlage BD Astrid Wohnhaus BD Chodov  
arbeiten Cadca SO 801 Gemerska Poloma Brücke Autobahn Zilina Abschnitt D1 - Visnove Brezovica Brücke Radweg Senkvice i  
hafen Alte Akademie München Meiendorfer Straße SEL17\_Generalplanervertrag Neubau Schule Milbertshofen Kita Bremen  
Cospuden Wohnen am Candidplatz ElbX - Elbquerung A8 Enztalquerung - Los 5 Grünbrücke Hochbrücke Horb - Neckertalbrü  
Neubau Ostbahn Dach-ARGE Kulturraffinerie K714 Dach-ARGE Carre Nassestraße Dach-ARGE Baugrube The Tide ARGE München  
ARGE Baugrube SPT Bundeskanzleramt Dacharge Spandauer Horn ARGE ELEMENTUM Dacharge Baugrube K33 Auswärtiges A  
grube Brücke Weinsbergstraße Köln Wohngebäude Gronau Geschwister-Scholl-Schule Offenbach Dreikönigsgymnasium Köln  
Duisburg Drosselbauwerk Frankfurt-Sindlingen Deichmann Campus Essen Gewerbecamp Süd Nauheim Pumpwerk Altrip Hochw  
Amphitheater Grundschule Rösrath BG Unfallklinik Frankfurt Datencenter FKQ Frankfurt Rathauszentrum Rheine Hasenkamp K  
Beethoven-Gymnasium Bonn Theodor-Heuss-Brücke Fernwärmepumpwerk Victoriaplatz Erweiterung Citti Park Kiel Studentenv  
Baakenhafen Bürogebäude Vibracoustic Hamburg, Marzipanfabrik Hamburg Kunstvilla Lühn in Lingen Uni Philosophikum Gieße  
ver Parkhaus Goodman Bremen Rader Hochbrücke Borgstedt Speicherquartier Bremen Holborn Raffinerie Hamburg Westbad Br  
meisel, Fichtelnaabbrücke Agentur für Arbeit Erfurt REWE Markt am Tierpark 68 Wohnhausgebäude Wohnquartier Hafenstraße  
kundemuseum Großschönau Goethe-Sporthalle Eisenach A26 Pfahlprobebelastung Süderelbquerung Kurhaus Wiesenbad, Grün



Hirschberg A5 Rastplätze Poysdorf A9 Ast Übelbach und Sturzbach A9 GESB Edlach - Gaishorn ABA Krakau BA 15 Abbruch und  
ARGE Aurachbrücke ARGE Bürogebäude Muthgasse 105 ARGE Erdbau Königsdorf ARGE Landesklinikum Wiener Neustadt ARGE  
ARGE Stadtstraße ARGE Techbase Linz ARGE Tunnelabdichtung H41 ARGE U2 Los 17-21 ARGE Wiener Netze Strom 2023 Auf-  
nterer Gampweg Nenzing Aussenanlagen Pflegeheim Dobl Aussenanlagen Recyclinghof Wolfsberg AVL Tech Center Steyr B 146  
ärmschutzwand Laboisen Bahnhof Baumgartenberg Base Camp Reiteralp Bauhaus Wels Bayer Alfa Wupptertal Besucherzen-  
05 Bildungscampus Puntigam Billa Hornstein Bioenergie Leibnitz Biomasseheizkraftwerk Neubau Bruck/Mur BKS Bank Filiale  
aufstockung BFI Graz Süd Büroaufstockung Feldbach Bürogebäude C4B Germering Bürogebäude H33 Bürogebäude Simmering  
A5 FDE Hirschberg Dachbegrünung Am Campus 1 DC Tower 2 Deponie Höhenbergen RSD Tainach Baulos 2 Deponie Jagodina  
ie Untersiebenbrunn Deponie Waidhofen/Taya Drammen Brücke Eco Plus Brücke Wr. Neudorf Elisabeth Arthotel GmbH - Ischgl  
fassadensanierung Monte Laa BPL10 Europäisches Patentamt EZE Erweiterung Süd Eisenstadt Fassadensanierung Gewog Schloß-  
ebarn Firmenzentrale Lauss in Helfenberg Florido Liner Flughafen Süderweiterung T3 Föhrenpark Wels Forum Donaustadt BT3  
ndezentrum Pfaffstätten Geothermie FH Campus Wien Geothermie Modecenterstraße 15-15a Geothermie Pflegehaus Kalksburg  
Gesamtsanierung Kaserne Auenfeld Gesundheitszentrum St. Pölten Gewerbepark Lieboch Gewerbepark Müllendorf Gnasbach-  
alle und Büro Müller Glas Lebring Halle Zeppelin Kalsdorf Hanuschkrankenhaus Hauptbahnhof Straßhof Sanierung Heizkraftwerk  
oder Heizwerk Satteins Hilton Mainz City Tiefgarage HÖRMANN Schauraum Dobl Hotel Ischglhof Hotel Seespitz Hotel zum  
at Keramikschule Stoob Intervet A50 New Packaging Building Kalibrierungszentrum Seibersdorf Kaserne Auenfeld Keramikfas-  
ndorf Kindergarten Staudach Kindergarten Wenns im Pitztal Klinik Landstraße Schadstoffsan. Kraftwerk Tauernmoos Kraftwerk  
en Freudenau Logistikhalle Hirter Logistikzentrum Bergheim Logistikzentrum Klade - Brauunion Luegbrücke Maria Saal Brücke  
Plaza Turm 2 GG Modemark Röther Mona Kesselhaus Oberwart Mondi Evaporation Fabrik MonteLaa Bauplatz 2 Nahversorgungs-  
bau Jugendzentrum Kapellerfeld Neubau Oekotel Kalsdorf Neubau Rohrbrücke Neubau Schachermayer Villach Neubau Siedler-  
ergstraße - Salzburg Neustifter Brücke Krems ÖAMTC Stützpunkt Dornbirn AA ÖBB Bahnhof Schwarzach St. Veit ÖBB Ebreichs-  
Wohnprogramm Fischelkolonie Obstlogistik Müllendorf Pama Feuerwehrhaus Außenanlage Pandion Officehome Parkgarage  
Preßguts Pflegezentrum Wilhelmsburg Post Gstadt Post Teufenbach Neubau Probepfähle A13 Luegbrücke Pumpstation Ohlstadt  
nen Objekt 15 Regallagerhalle C. Bergmann Reha Wiesing Reihenhausanlage Ferlach Reihenhausanlage Lönsstraße Reihenhau-  
Brückl Röhler Neubau Werkstätte Ruhruni Bochum RUB S3 Bolków - TS-26 S6 Gloggnitz - Maria Schutz S7 Abschnitt West  
Sanierung Alpbachbrücke Tegernsee Sanierung Bad Kleinkirchheim Sanierung Badeteich in Rohrbach bei Mattersburg Sanierung  
ücke Schülerwohnheim Mistelbach Schulzentrum Mariazell Seehaus Weiden am See Siemens Healthcare Silicon Austria Labs  
reicherbecken Tarvis Speicherkraftwerk Kühtai Speicherteich Gamsgarten II Speicherteich Gargellen I Speicherteich Goldried II  
gasse Zwischenwasser Straßenbegrünung Spallartgasse Straßenmeisterei FK Nord Koblach Strassensanierung Eibiswald Studio  
giezentrum Seestadt BT3 TG Unsereins-Feschnig, 9020 Klagenfurt Therapiezentrum Lindenbreite TILLY Pelletswerk Traggerüst  
au Mattersburg Wedekindgasse Umbau Metro Salzburg Umbau Ordination Siegendorf Umbau Prüfstände HVS Umbau Schloss  
eyer Umspannwerk APG US Wels Deponieabdeckung Schießstätte Vereinshalle Parndorf Viadukt Kalte Rinne Vila Vita - Haupt-  
rsk. Wien Museum Wirtschaftspark Kittsee Wohn- und Geschäftshaus Markgrafendamm Wohnanlage Einleitenweg Hallwang  
Wohnhaus Hohenberger-Moser Wohnhaus Kösslmühlgasse in Gmunden Wohnhaus Pietsch Seeboden Wohnhaus Röttergasse  
t Wohnhausanlage Feldkirchen Wohnhausanlage Gastgebasse 4 Wohnhausanlage Giardino Oberwaltersdorf Wohnhausanlage  
se Wohnhausanlage Seestadt H4 Wohnhausanlage Seiersberg ONE Wohnhausanlage Ziedlergasse 21 Wohnhausanlage Franz  
gund ARGE Spital Altdorf ARGE Rutschung Wasi ARGE Titlis 3020 Lagerhalle Weber Schattdorf K27 Bristenstrasse Mehrfami-  
nnel Wassen Spülbohrung Titlis Mehrfamilienhaus Löwengässli Neubau Rössli Hospenthal Brücke Witwasser Brücke Rambach  
tathal Parkhaus Stoosbahn Mehrfamilienhaus Altmattstraße Villen Weggis Mehrfamilienhaus Im Ring 4 in Brunnen Sanierung  
tunnel ARGE U2 17 WAM A9 SKT - Tunnelbau Design Gradistea Bridge Melbourne Airport Rail - SSA Alliance Pa Melbourne Air-  
ge Tunnel Cramberg Arge Tunnel ElbX Pumpspeicherkraftwerk Forbach LG3 Zilina LG3 Design & Build Sibiu SP4 LG4 Design &  
olel Boneh LG3 - Supervision Solel Boneh Sofia Civil Airport LG3 Data Center TS-04 Krakow Tunnel Bahnhofsteststelle Wloknarzy/  
o Torpol Grodzisk-Podkowa LK47 WKD UW pale VDW Chrzanów Duży FDP Legionowo Wyspińskiego Sokółka S19 Marki Kosy-  
skowa Dolina Terminal Swinoujście DK22 Knybawa S7 Widoma DK18 - etap II Mostostal S19 Kraków Podedworze Bania Bialka  
Pachonskiego Zakopane Witkiewicza Rzeszów Spalarnia S52 Tunel Obwodnica Lancut Katowice Medyków Kraków Bochenka  
wa, Sad Sniadeckich Poznan TETOS Poznan Szklarska Poreba, Horizon II Dolna Odra Gaspipeline Data 4 Poland S7 Intercor Le-  
ücken Gwda und Notec in Ujście Bürogebäude Prokocim Spital Naklo underpass Grudziadz platforms Wladyslawowo Dworcowa  
and SLP Sokółka Asphaltfabrik Rzeszow Waste to Energy Plant LG1 Czarne LG3 Czarne LG1 DABS POWIDZ LG4 DABS POWIDZ  
asice ARGE Prostejov Barrandovský most Liberec Brückensanierung Hochwasserschutz Svratka Pfahlgründung Svratka River  
ke 075.1 Fußballstadion Pardubice Bahnbrücke Ceske Velenice Jablunkov Brücke Presserei Vyhybkarna-lisovna Lagerhalle Al-  
vec Vila Lopatecka FN Motol Praha - Krankenhaus SCIM Vila Lopatecká - ALCAPLAST PD Motol - Krankenhaus SCIM Asphalt-  
n Modra Wohnprojekt Marina Nova D1 Bratislava ARGE Hochbrücke Horb Wohnbau Sellerstraße PHU Uhlenhorst Kita Baaken-  
Teutendorfer Siedlung Preconstruction LG1 Data Center SAD EWE Stickgraser Allee Delmenhorst Havelufer Quartier Quartier  
cke ARGE Baugrube Kurfürstenstr. 72-74 ARGE Drachenstein Weinheim ARGE Medius KLINIK Ostfildern Dach-Arge Baugrube  
Alte Akademie Baugrube Tro Dach-Arge GoWest Mecklenburgische Straße Dach-Arge Baugrube Bundeskanzleramt Erw. Dach-  
amt Dach-Arge Hochbrücke Horb Dach-Arge Südschnellweg Hannover Neubau Geh- Radwegbrücken Fulda FAIR Mäanderbau-  
n Universitätsklinikum Münster ParkTrio Frankfurt Evonik Wesseling Wehranlage Güdingen Studio SWR Mannheim Mercator  
asserschutz Berkel Wohnstift Am Königshof Kulturraffinerie Monheim Carré Nassestraße Bonn Alte Brauerei Mainz Oude Marie  
unstdepot LG3 Südschnellweg Logistikzentrum KION Rechenzentrum FRA10 Entlastungssammler Wupper Forum City Mülheim  
wohnheim Theodor-York-Straße Neubau ASFC-Halle Kiel Europa-Center Bürogebäude Bremen Klärwerk Salzgitter Hamburg Kita  
n Kläranlage Lohne Reha Zentrum Bad Zwischenahn Museumsforum Oldenburg The Tide Hamburg LG1 Südschnellweg Hanno-  
remen PHU Pflegeheim Uhlenhorst Hamburg Überseequartier Süd Los 2 Hamburg LNG Terminal Stade Viadukt Chemnitz Mehl-  
Greifswald Hafen ABZ Spandau Spandauer Horn Neubau Ostbahn Berlin Erweiterung Hafenanlage Königs Wusterhausen Volks-  
dung Saalanbau Viadukt DA Chemnitz HMT Hochschule für Musik und Theater Ros Hafenbecken II Magdeburg Klärwerk Eching

# TABLE OF CONTENTS

8

22

34

52

62

68

82

---

## **ABOUT PORR**

Built to live.

---

## **BUILDING CONSTRUCTION**

Built to rise.

---

## **CIVIL ENGINEERING & INFRASTRUCTURE**

Built to connect.

---

## **ENVIRONMENTAL ENGINEERING**

Built to last.

---

## **DESIGN & ENGINEERING**

Built to innovate.

---

## **SPECIAL COMPETENCIES**

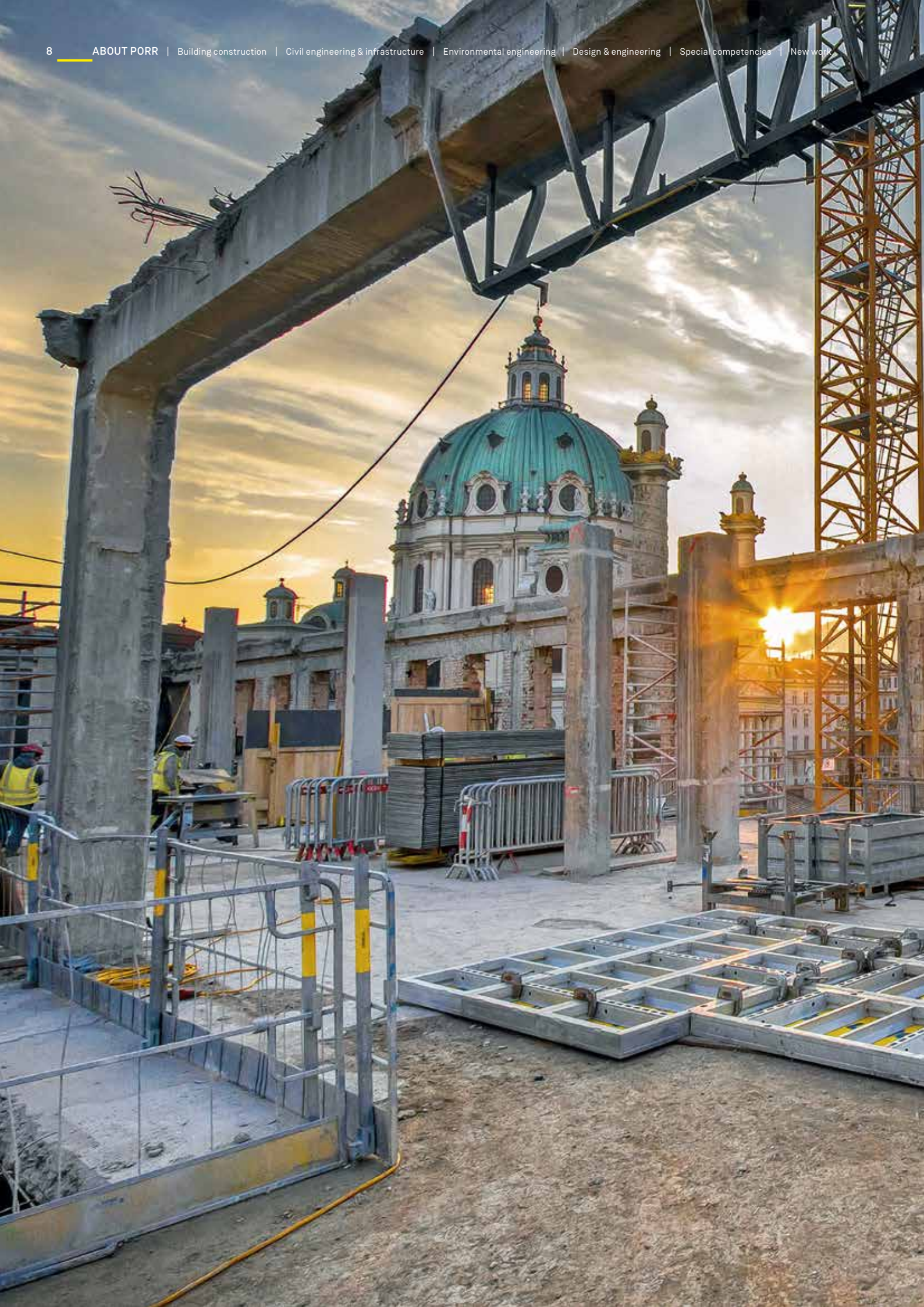
Built to create.

---

## **NEW WORK**

Built to collaborate.







## BUILT TO **LIVE.**

Building is our purpose. What we build lasts. Our projects are as unique as they are essential. Because we build living spaces and chart new paths for the future. PORR realises what others merely dream about.



DESIGN

## ONE-STOP

From the idea to the design, planning, build and realisation up to operations. As general contractor or design & build provider. We do almost everything ourselves.

DEMOLISH

OPER



DORR

BUILD

## SHOP

For clients and construction managers, this not only means one single point of contact but also efficient execution.

RENEW

RATE



# FOR A SUSTAINABLE FUTURE

Digitalisation, deglobalisation, decarbonisation and demographics are the challenges that are shaping our world. As a construction company, we are part of this change. Today, we are shaping the world we will live in tomorrow. And we are shaping it in such a way that it becomes as liveable as possible for us and future generations.

A fascinating task for PORR and for me personally. Our services are extremely varied: The imposing Filstal Bridge is an impressive example of how we connect people and deliver sustainable transport solutions. As the third highest railway bridge in Germany, it stands as a masterpiece of structural engineering.

The slender Skysawa Tower in Poland – built in just 36 months with 40 storeys – in turn offers new prospects for the world's rapidly growing urban centres. And with the LNG terminal in Swinoujscie, Poland, and the expansion of the Austrian pumped storage power plant Limberg III, we are making a valuable contribution to sustainable energy supply in our home markets.

Examples such as these convey the breadth of our work. Hardly any other construction company in Europe is as broadly positioned as we are. In the next few pages we will give you an insight into this diversity and show you what PORR contributes to a rapidly changing world every day.

**Karl-Heinz Strauss**  
CEO





**Klemens Eiter**  
Member of the Executive  
Board and CFO

**Karl-Heinz Strauss, MBA, FRICS**  
Chairman of the Executive Board  
and CEO

**Josef-Dieter Deix**  
Member of the Executive Board  
and COO

**Claude-Patrick Jeutter**  
Member of the Executive Board  
and COO

# BUILDING FOR TOMORROW'S WORLD

The world is changing. Urbanisation, climate change and digitalisation are having a lasting impact on us and triggering far-reaching changes. Our industry plays a decisive role in this and is an important building block for a sustainable world.

## Cities are getting smart

Urbanisation is a key driver of change in our modern world. People are flocking to the metropolises. Today, more than half of the world's population already lives in urban centres. By 2050, this figure is expected to rise to 80 percent. And that has consequences: Cities are reaching their limits. So it is becoming increasingly important to ensure affordable housing, the supply of water, electricity and gas, as well as communications infrastructure. Sustainable traffic management is just as essential as comprehensive public transport infrastructure. As an infrastructure specialist, PORR plays a leading role here: It changes cityscapes, creates space both upwards and downwards, and connects people with one another.

## The world is becoming greener

Priorities are changing with the climate. The EU has set itself the goal of achieving climate neutrality by 2050. This involves reducing emissions by at least 55 percent by 2030. That is why we need to protect habitats and biodiversity now and stop the uncontrolled consumption of resources. This challenge is especially important for the construction industry. PORR is aware of its responsibility: It develops new, climate-friendly raw materials, recycles materials in line with the circular economy, uses renewable raw materials and utilises alternative energy sources.

## New opportunities

The digital world is more of an opportunity than a challenge. Artificial intelligence will play a key role in the future. PORR is already in the thick of it: Digital networking enables an optimal collaboration with all parties involved – in the design and planning of buildings as well as in calculating the carbon footprint of the trades. Joint platforms such as Sequello provide a basis for efficient logistics that reduce emissions. The use of artificial intelligence enables buildings to operate in a way that is resource-efficient and low in emissions. As PORR, we are taking advantage of the opportunities offered by automation and digitalisation.

Massive changes can only happen with and through construction. PORR offers answers to the challenges of constant change. Our vision: Home of Construction. To Build a Better World. We're building a better world.





**PORR**



# THIS IS WHAT WE BUILD ON. OUR FIVE PRINCIPLES

Around 21,000 PORRians – these are the hidden champions of PORR, people who give their best every day and live a culture of cooperation. They build with Passion, Shoulder to Shoulder, Reliability, Appreciation and Pioneering Spirit – with five principles of a corporate culture that unites us all. They move worlds with their knowledge, their ideas, and their drive. Reliability creates the basis for dealing with each other responsibly. Standing shoulder to shoulder and thinking outside the box are practised in every phase of business development.

PORRians appreciate, accept and support each other. With passion and a pioneering spirit, they are always one step ahead. This is our corporate culture, one which ensures our long-term success. This is who we are. We are PORR.

## RELIABILITY

Commit – don't command.  
Responsibility starts with me.  
Rules are not a matter of personal choice.

## SHOULDER TO SHOULDER

Dare to go beyond your silo.  
No lone wolves, please.  
Information & knowledge should be shared.

## APPRECIATION

Diversity – definitely.  
I am not the centre of the universe.  
Fairness is a matter of honour for us.

## PASSION

Working together for the best solution.  
No compromises when it comes to construction.  
The best minds at PORR.

## PIONEERING SPIRIT

Always a step ahead.  
Entrepreneurs at heart.  
Mistakes are a learning opportunity.





DORR





# ALL AREAS AT A GLANCE

## BUILDING CONSTRUCTION

Revitalisation  
Industrial construction  
Shopping centres  
Office buildings  
Stadium construction  
Healthcare facilities  
Educational institutions  
Residential construction  
Hotels

## CIVIL ENGINEERING & INFRASTRUCTURE

Power plant construction  
Bridge construction  
Road construction  
Railway construction  
Tunnelling  
Hydraulic engineering & harbours  
Special civil engineering  
Rock technology  
Structural engineering  
Pipeline construction

## ENVIRONMENTAL ENGINEERING

Demolition  
Landfill operations  
Remediation of contaminated sites  
Waste management  
Earthworks  
Gravel production  
Asbestos and pollutant removal





## DESIGN & ENGINEERING

General planning  
Building certification  
LEAN Management  
Building Information Modelling (BIM)  
Fire protection  
Architecture  
Technical building services planning  
Structural design  
Building preparation  
Construction supervision

## SPECIAL COMPETENCIES

High Alpine construction  
Asphalt and concrete production  
Facade construction  
Airport construction  
Waterproofing  
High-rise construction  
Slab Track Austria  
Concrete slab construction

Facility management  
Mastic asphalt  
Healthcare  
Public Private Partnerships (PPP)  
Property management  
Steel construction

# FOCUS ON EUROPE

## PORR'S 7 HOME MARKETS

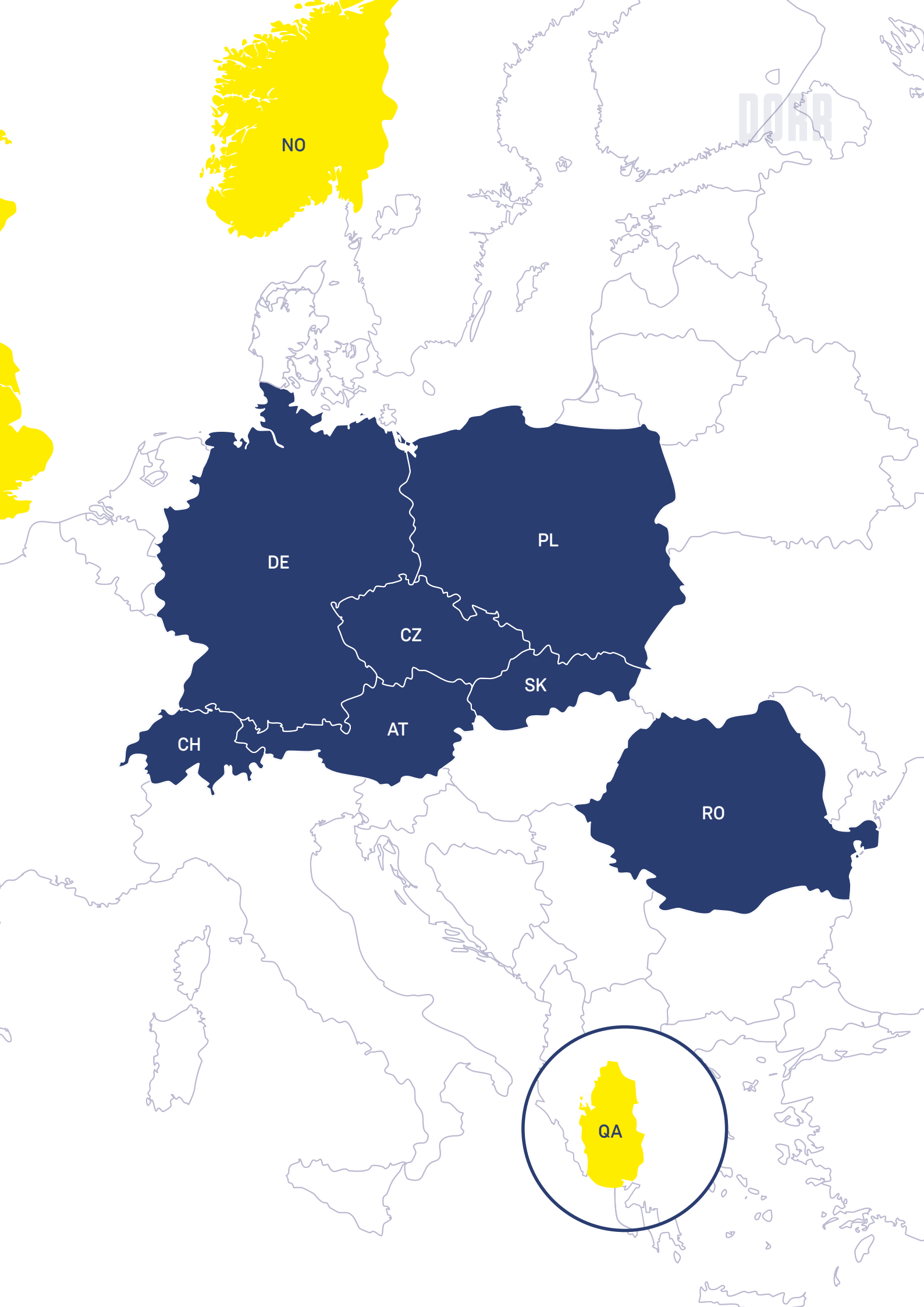
Our home markets are Austria, Germany, Switzerland, Poland, the Czech Republic, Slovakia and Romania. We offer our entire service portfolio here.

In selected international project markets, we focus on our premium products in tunnelling, railway construction and civil engineering. We are currently represented with our expertise in the project markets of Norway, the UK and Qatar.

- Home markets
- Project markets







NO

DE

PL

CZ

SK

AT

CH

RO

QA



BUILT TO  
**RISE.**

## **BUILDING CONSTRUCTION**

Revitalisation  
Industrial construction  
Shopping centres  
Office buildings  
Stadium construction  
Healthcare facilities  
Educational institutions  
Residential construction  
Hotels









# BUILDING CONSTRUCTION

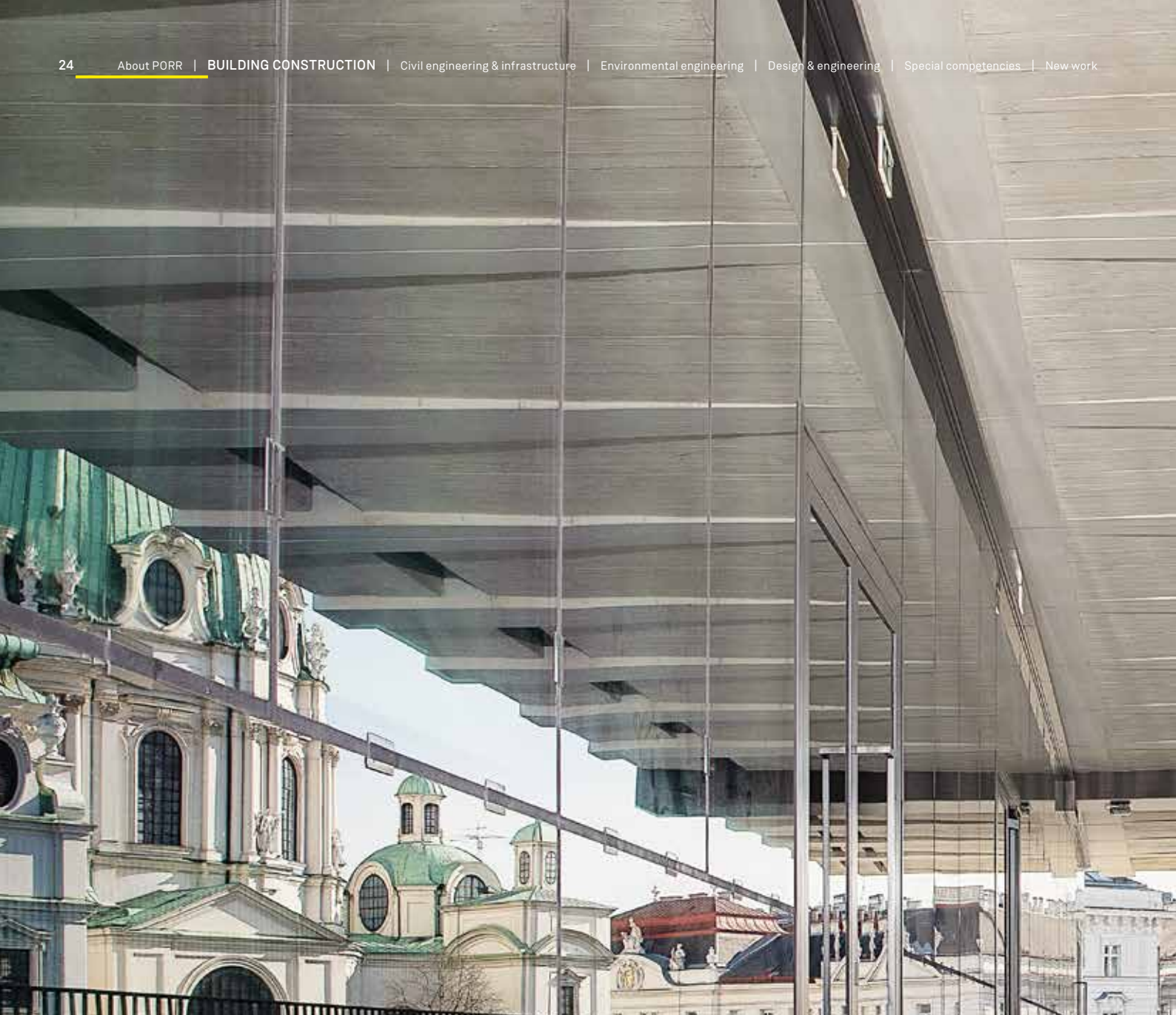
The future is urban: By 2050, more than two thirds of the world's population will live in urban centres. Intelligent planning is crucial in order to sustainably preserve the quality of life in growing cities.

PORR is involved in numerous building construction projects for residential, hotel, industrial and office buildings, either independently or as the lead partner. Our construction method combines the utmost efficiency with maximum conservation of resources. Innovative high-rise buildings can play a decisive role in overcoming the lack of space in cities. PORR is ideally positioned here thanks to the use of technologies such as Building Information Modelling (BIM) and the consistent avoidance of waste through LEAN management.

Let's take a look at the future: The city of tomorrow will be more sustainable, smarter and bigger. The boundaries between living and working are becoming blurred and the need for multifunctional spaces for living, working, co-working, recreation and leisure is constantly growing. The increasing use of public transport and electromobility means that traffic areas can be converted into green spaces to make room for nature. PORR is already setting standards for a sustainable future with a holistic concept for climate-friendly construction materials, recycling and the use of renewable resources.

**Supreme Audit Office – Czech Republic**  
Energy-efficient office building in Prague





### **Wien Museum – Austria**

Spectacular remodelling in the heart of Vienna

## **REVITALISATION**

After 60 years of operation, the listed Wien Museum at Karlsplatz in Vienna was renovated and extended by a consortium consisting of PORR, Ortner and Elin.

### **Structural balancing act**

The existing structure could not support any additional loads, which is why a unique construction was required. The new fourth floor floats above the old building with the help of an autonomous steel structure. This steel structure, weighing around 1,100 tonnes, was placed on new exposed walls made of white concrete. The trusses were prefabricated in Carinthia and transported to Vienna using special transport. As a result, the museum will have almost twice as much usable space in future.



DORP





# INDUSTRIAL CONSTRUCTION

Industrial buildings are characterised by their unmistakable identity. Projects often take on impressive dimensions that place the highest demands on design, build and logistics – one example of this is the planning and expansion of the onshore and offshore sections of the Lech Kaczyński LNG terminal in Swinoujscie, Poland.

The task is divided into two parts: An onshore part for the construction of a new LNG storage tank with a gross capacity of approximately 180,000 cubic metres, and an offshore part for the construction of a second jetty. The purpose is to increase the reliability of the technological process and to secure the option of loading LNG onto ships of various sizes, including LNG bunker ships, tank wagons and ISO containers.

## LNG Terminal Swinoujscie – Poland

Industrial construction with the highest standards





**PORR**





## SHOPPING CENTRES

For shopping centres, the focus is on profitability, logistics and the customer experience. Shopping has become a leisure activity and so the presentation of goods must appeal to all the senses. Today's customers have increasingly high expectations of the products on offer and the way retail spaces are designed.

In city centre locations, the challenge is to integrate shops seamlessly into existing ensembles. In addition, this often requires combining the fabric of historical buildings with contemporary logistics. A challenge that PORR masters as a specialist with extensive experience.

### **Mercator One Duisburg – Germany**

Architectural and urban development  
highlight in North Rhine-Westphalia



# OFFICE BUILDINGS

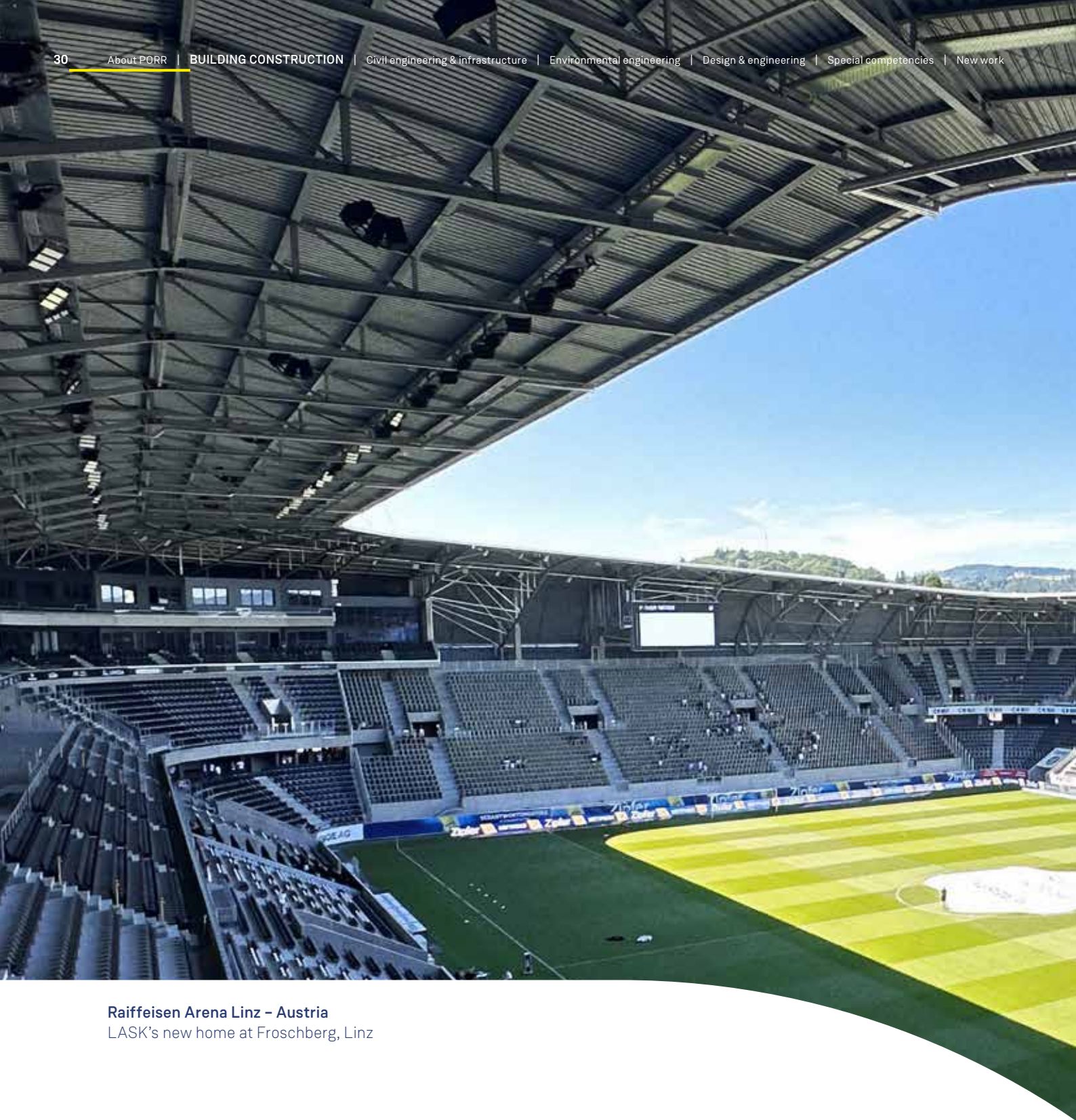
The project by architect Armon Semadeni emerged as the winner of a multi-stage selection process. The 21-storey Franklinturm was erected south of the railway station on the Hofwiesenstrasse site. In combination with the neighbouring high-rise buildings Swissôtel, Neumarkt and Andresturm, the 80-metre-high building blends harmoniously into the skyline of the modern service centre and offers an attractive panoramic view over the economic metropolis of Zurich. The building also ticks all the boxes in terms of efficiency. This includes well thought-out space utilisation and forward-looking energy efficiency that conforms to the “DGNB Platinum” label of the Swiss Sustainable Building Council (SGNI).



**Franklinturm – Switzerland**  
New office building as eyecatcher  
in the north of Zurich







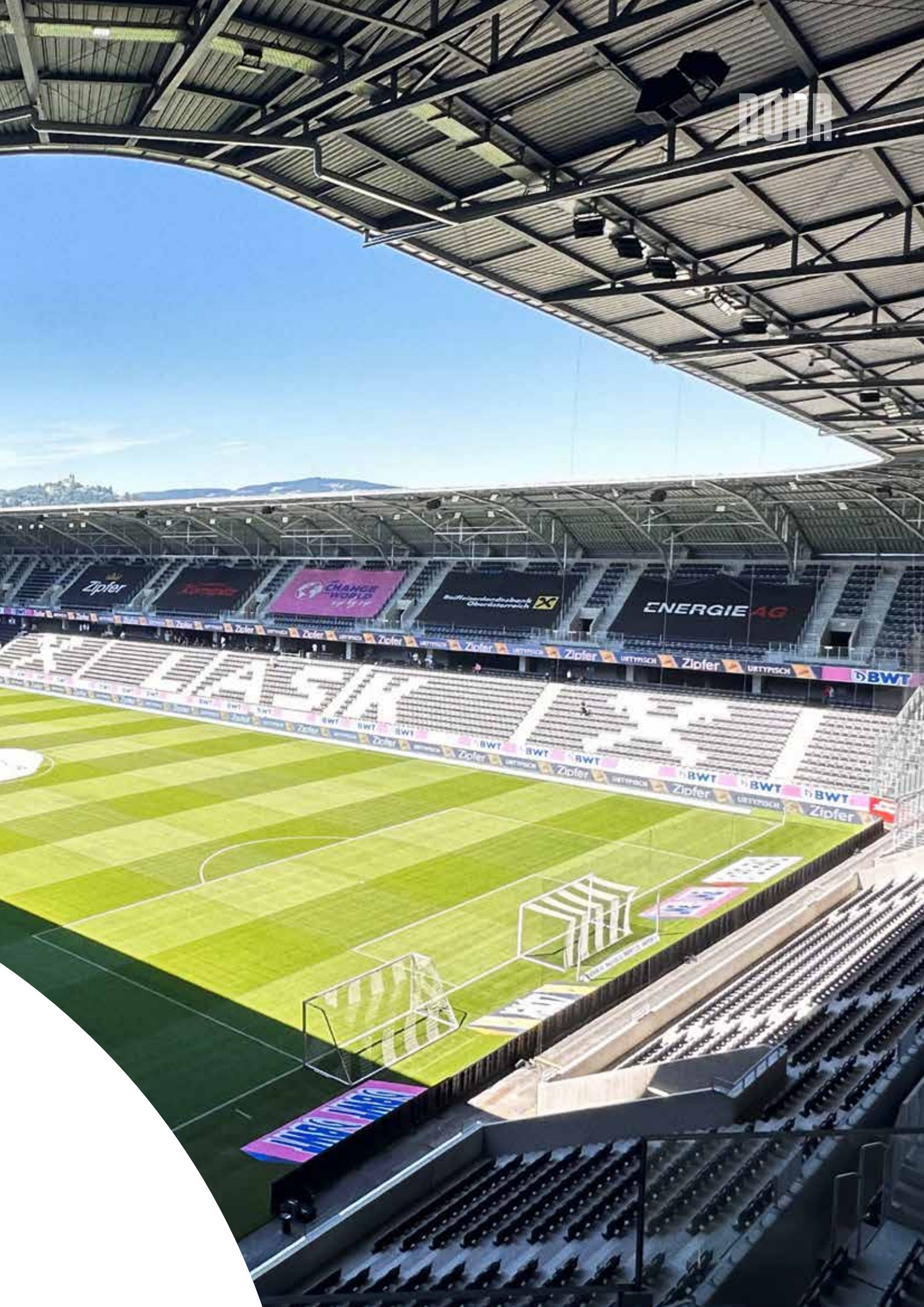
#### Raiffeisen Arena Linz – Austria

LASK's new home at Froschberg, Linz

## STADIUM CONSTRUCTION

Soccer inspires people. And we create the space needed for it. As part of UEFA Euro 2008, PORR carried out extensive new builds and adaptations at the stadiums in Klagenfurt, Wals-Siezenheim and Innsbruck. Special dismantling requirements meant that flexible planning and precisely calculated schedules were crucial. The new Raiffeisen Arena in Linz has been used by LASK since February 2023.





DOHA

Zipfer

CHANGE  
WORLD

Bundesbank  
Oberösterreich

ENERGIE AG

ALIAS IT

BWT

BWT

BWT

BWT

ALIAS IT





### Rehabilitation centre Münster – Austria

Austria's most modern rehab centre in Tyrol

## HEALTHCARE FACILITIES

Whether it's a hospital, nursing home or rehab clinic: As a general contractor, PORR is a reliable partner from design and planning to ongoing operations. Our vision in healthcare construction is to create multifunctional buildings that fulfil not only economic, structural and medical needs, but above all human needs. In close cooperation with our subsidiary *hospitals*, we create healthcare facilities that enhance wellbeing and support people's recovery process.

The Pomeranian University Hospital in Szczecin will house 16 organizational units including six units of the Center for Translational Medicine, four units of the Collegium Pharmaceuticum and five units of the Independent Clinical Hospital No. 1 in Szczecin on an impressive 49,000 square metres, the equivalent of seven soccer pitches. In addition, the building will house 49 teaching and lecture rooms, including an auditorium with more than 400 seats, laboratories, outpatient clinics and an underground parking garage with around 600 parking spaces.

### Pomeranian University Hospital Szczecin – Poland

Modern clinic, teaching and research centre in Szczecin



# EDUCATIONAL INSTITUTIONS

PORR is building the KinderKunstLabor in St. Pölten. A triangular building made of wood and concrete with four storeys in Altoonapark, designed by the Viennese architectures "Schenker Salvi Weber ZT GmbH".

## **Focus on children.**

The entire building is designed so that children can move and play freely both indoors and outdoors.

## **Environmental construction.**

From the renewable building material wood to preserving the tree population and the insect and bird-friendly planning of the lighting, care is taken to minimise the footprint and protect the natural surroundings.

PORR



**KinderKunstLabor St. Pölten – Austria**  
Exhibition centre for contemporary art –  
focus on children and ecology







BUILT TO  
**CONNECT.**

**CIVIL ENGINEERING  
& INFRASTRUCTURE**

Power plant construction

Bridge construction

Road construction

Railway construction

Tunnelling

Hydraulic engineering & harbour facilities

Special civil engineering

Rock technology

Structural engineering

Pipeline construction









# CIVIL ENGINEERING & INFRASTRUCTURE

PORR plays a decisive role in shaping modern society. It not only creates visible structures, but also the invisible basis underpinning our daily lives together.

Civil engineering projects form the foundation for well-functioning everyday life. From special civil engineering to road construction, structural engineering and tunnelling, to hydraulic, sewage and pipeline construction – PORR creates the infrastructure we need to live together.

The challenges of modern urban infrastructure are immense. Urbanisation requires sustainable mobility and transport systems that are digitalised, energy-efficient and low in emissions. Investments in road and rail construction, especially for the railways, support the development and improve the quality of the transport network while contributing to climate protection. PORR masters complex challenges in civil engineering, whether in cramped inner-city environments or in rural regions. Expertise, experience and flexibility are the key to offering the right solutions.

**Filder Tunnel/Stuttgart 21 – Germany**  
Innovation in the Filder Tunnel: Cement-free construction with annular gap mortar







**Inn joint power plant – Austria**  
Largest run-of-river power plant  
in the Swiss-Austrian Alpine region

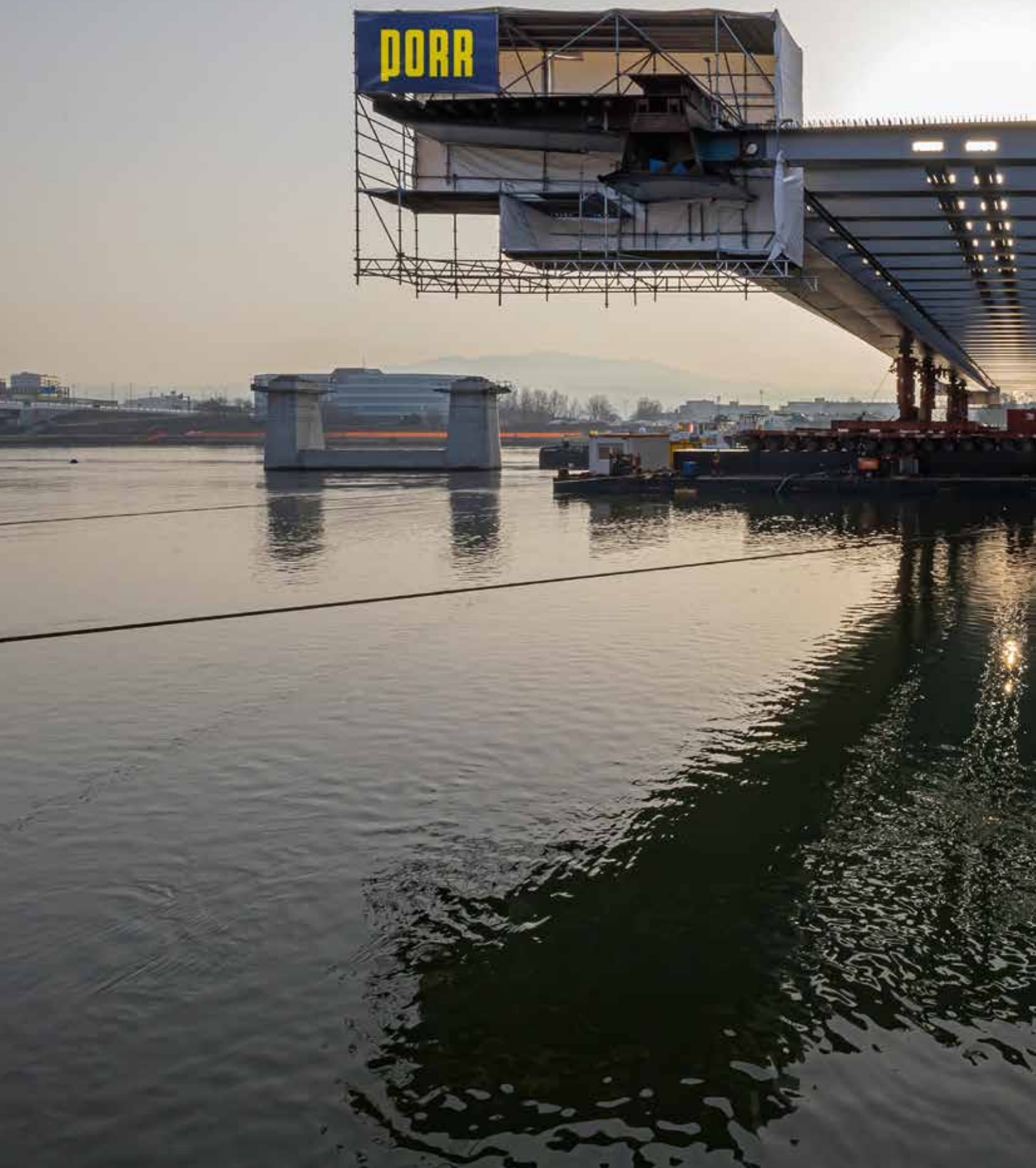
## POWER PLANT CONSTRUCTION

By building power plants, we make a valuable contribution to the secure supply of electrical energy. We handle complex power plant projects, work together with our customers to develop customised and cost-effective solutions and meet the highest standards. We focus primarily on renewable energy projects such as wind and hydroelectric power plants, for example the Limberg III pumped storage power plant in Kaprun or the Inn joint power plant in Austria. At the heart of this project is a weir system with a dam height of around 15 metres. The reservoir behind it is 2.6 kilometres long and has a storage volume of around 900,000 cubic metres.

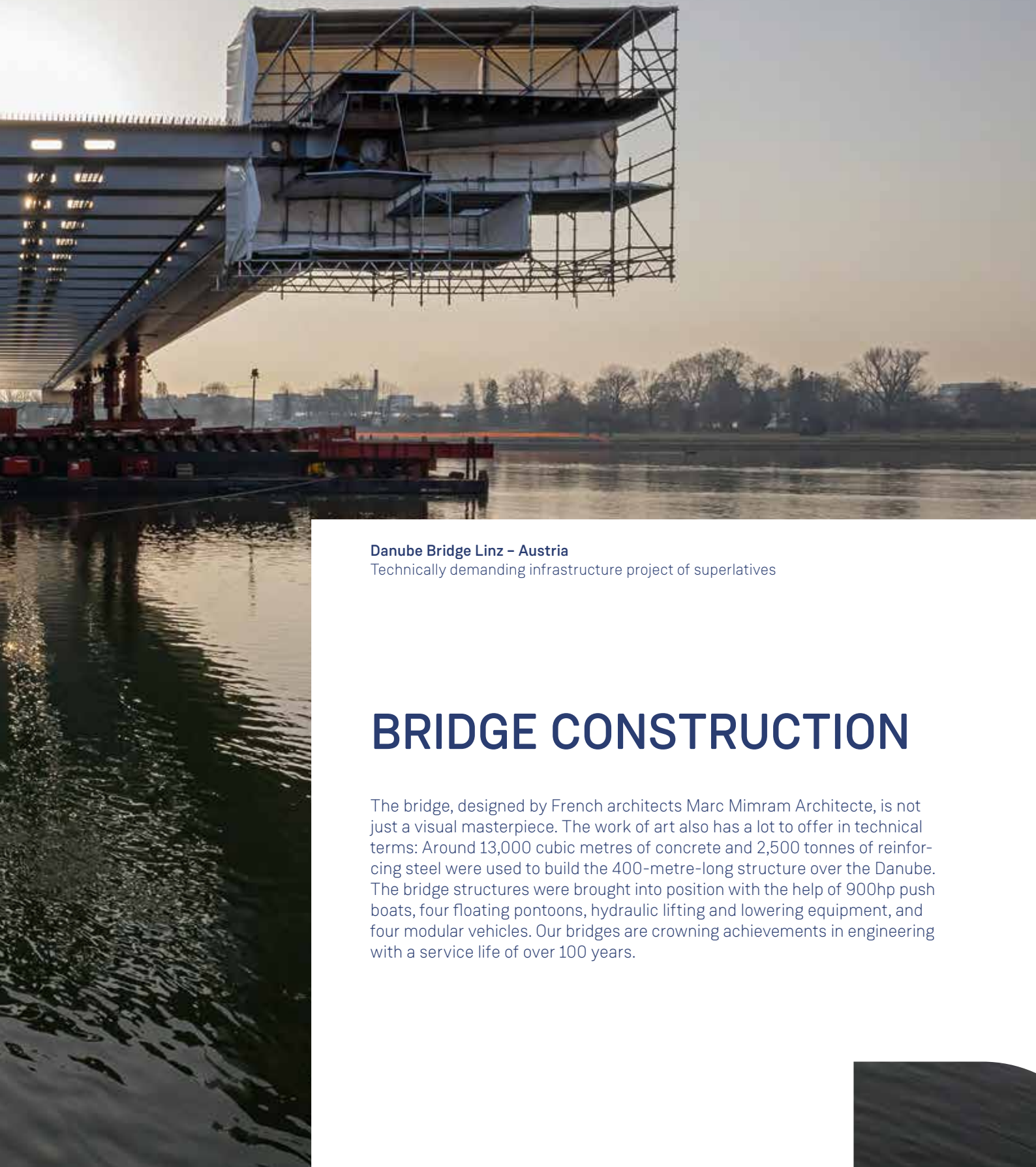












#### **Danube Bridge Linz – Austria**

Technically demanding infrastructure project of superlatives

## **BRIDGE CONSTRUCTION**

The bridge, designed by French architects Marc Mimram Architecte, is not just a visual masterpiece. The work of art also has a lot to offer in technical terms: Around 13,000 cubic metres of concrete and 2,500 tonnes of reinforcing steel were used to build the 400-metre-long structure over the Danube. The bridge structures were brought into position with the help of 900hp push boats, four floating pontoons, hydraulic lifting and lowering equipment, and four modular vehicles. Our bridges are crowning achievements in engineering with a service life of over 100 years.





# ROAD CONSTRUCTION

PORR has always been a pioneer in the field of road and infrastructure construction. Right back at the start of the 20th century, PORR played a key role in building the Vienna Ring Road and in the construction of the Grossglockner High Alpine Road in 1930. We build on this extensive experience in every single project. Today, PORR is a leader in the construction of transport infrastructure far beyond its home markets. This was also the case with the multi-million-euro Bludenz motorway junction project, which PORR realised in a joint venture with the Vorarlberg subsidiary Nägele Hoch- und Tiefbau GmbH.



An aerial photograph showing a large-scale highway interchange project. The image captures a multi-level junction with several curved ramps and straight sections of road. A central area is under construction, with exposed earth, construction equipment, and materials. To the left, a completed section of the road curves around a green island. To the right, a multi-lane highway runs parallel to the construction area. The overall scene depicts a major infrastructure project aimed at improving traffic flow.

DORR

**Junction Bludenz/Vorarlberg – Austria**  
Traffic relief through a multi-million-euro project





**Railroad line Gradistea/Bucharest – Romania**  
Technically demanding mega-project in Romania

## RAILWAY CONSTRUCTION

Giurgiu county in Romania plays an important role in transit due to its port and the border crossing to Bulgaria. A key transport connection is the railroad line in Gradistea, linking the region with the capital Bucharest. PORR recently modernized this important infrastructure project, renewing a 70-kilometer railroad line. The newly constructed twelve kilometers of this line include four bridges with spans from 45 to 136 meters as well as a viaduct with a length of 1,216 meters. Particularly noteworthy is the first use of the state-of-the-art “Slab Track Austria” technology in Romania. An important project in this context is the Arges Bridge, which is the longest fully welded railroad bridge in the country. During construction, five bridge sections with a total weight of 1,300 tons were lifted into place using a 750-ton crane.



DORR





**Bahnhof Pačejov – Czech Republic**

12,000 kilometres of railway track  
for the state railway company





# RAILWAY CONSTRUCTION



As part of the construction work for Pačejov railway station, extensive improvements were made to rectify the poor condition of the superstructure and substructure. The outdated signalling and communication technology was replaced with modern applications that enable remote traffic control. What's more, the existing platforms were made barrier-free by building a side platform and a centre platform in Pačejov. Disabled access was ensured via a newly constructed underpass. In addition, the junctions at both ends of the station were rebuilt, including the track couplings. The project also included the repair of two railway bridges and nine culverts.







Drill head of a tunnel boring machine

# TUNNELLING

The Brenner Base Tunnel is one of the largest infrastructure projects for Austria and an important response to the core issue of mobility facing Europe. Thanks to its extensive expertise in tunnelling, PORR was able to win the contract and is looking forward to implementing this project of the century.

## Full speed ahead through the mountains

Construction of the Pfons-Brenner section will take around six years. The scope of the contract includes two single-track main tunnels with a total length of 25.2 kilometres. The PORR-MARTI consortium is using two TBMs as well as blasting. Each of the TBMs has an excavation diameter of 10.37 metres and can cover a distance of up to 30 metres per day. In addition to the main tunnels, further 3.6 kilometres of exploratory and cross-passage tunnels are planned. The Brenner Base Tunnel will play a key role in the European transport network as a link between Austria and Italy.



U5 Europaviertel  
Frankfurt am Main – Germany  
Construction of an underground  
light railway line









# HYDRAULIC ENGINEERING & HARBOUR FACILITIES

Hydraulic engineering includes the fields of hydraulic energy engineering and river engineering, coastal engineering, waterway engineering, flood protection or groundwater remediation. In addition to the pure expertise in structural engineering, another key factor is the assessment of the environmental impact of hydraulic engineering projects.

From small power plants to flood defence construction: As a leading provider in hydraulic engineering, PORR is involved in a wide range of projects in power plant construction, flood protection and dam construction in Austria and abroad. Hydraulic engineering combines a wide range of construction disciplines. From subsoil sealing, specialised civil engineering, tunnelling, earthworks, concrete and road construction to landscaping, PORR can handle the entire range of services with its own specialist staff and inhouse expertise.



## **Gdansk breakwater – Poland**

Demolition and reconstruction of the breakwater in the northern harbour of Gdansk



# SPECIAL CIVIL ENGINEERING

Every construction project requires a solid foundation – one precisely tailored to the respective soil conditions and the intended use. Special solutions are required, especially for larger projects. As a full-service provider in the field of specialised civil engineering, PORR carries out all types of excavation support, slope stabilisation, deep foundations, sealing walls for flood protection projects and soil improvement. We offer all modern state-of-the-art solutions and cover the entire spectrum of specialised civil engineering – from diaphragm, sheet pile and narrow walls to injections for stabilization, sealing and elevation. PORR's specialised foundation engineering is characterised above all by its uniqueness on the market: We offer a customised overall solution for every construction project, taking into account the most diverse requirements. This is also the case with DC Tower II on Vienna's Donauplatte, which will rise 180 metres into the air. The new landmark will house offices, shops and apartments for rent.

**DC Tower II Vienna – Austria**  
Striking residential and office  
building in Donaacity Vienna





# ROCK TECHNOLOGY

PORR SUISSE AG has a team of specialists in the field of rock engineering. When it comes to rock clearing, rock stabilisation, different anchor works, nail walls, slope stabilisation, avalanche barriers, ice clearing, or repairing and installing rockfall protection systems: We meet the highest standards of reliability, flexibility and versatility with our experienced team, allowing us to act immediately in myriad ways. This was also the case with the extension of the Muotathalerstrasse Gibelhorn in Switzerland. The biggest challenge was in the middle construction section: Over a length of approx. 250 metres, with a geological section that was highly fissured in places, safety work had to be carried out on an approx. 80 metres-high rock face with 20 metres-long strand anchors. All anchoring and concreting work was done from a working scaffold, and since there were only a few places for it to rest on the ground, it had to be partially suspended. In this section, the scaffolding could only be secured by our rock specialists, who were working on the hanging rope. Only then was it possible to even erect the scaffolding for the construction work.



**Extension of Muotathalerstrasse  
Gibelhorn – Switzerland**  
Construction of an access road over  
an 80 metres-high, vertical rock face









BUILT TO  
**LAST.**

## **ENVIRONMENTAL ENGINEERING**

Demolition

Landfill operations

Remediation of contaminated sites

Waste management

Earthworks

Gravel production

Asbestos and pollutant removal







# ENVIRONMENTAL ENGINEERING

The construction industry is gradually becoming more sustainable. And PORR is proactively driving this change. This begins as early as a project's design and planning stage. PORR focuses on innovative solutions and develops ideas. With one goal: To Build a Better World. The circular economy is a key lever in realising this vision.

The circular economy turns our linear system on its head. The throwaway economy is truly wasteful. In contrast, a closed loop harbours enormous potential: When a product reaches the end of its life, the resources and materials remain within the economy wherever possible and are reused in a productive way. One outstanding example of circular economy is the gypsum-to-gypsum recycling plant that PORR is going to operate together with partner companies. PORR also has other recycling plants with processes to utilise construction rubble and mineral wool. In order to ensure the best possible recycling of resources, the materials used in buildings, their composition, origin and recyclability are recorded and documented, making them transparent. This creates added value not only for nature, but also for customers.



**Danzermühl power station – Austria**  
Focus on sustainability

PORR





# DEMOLITION

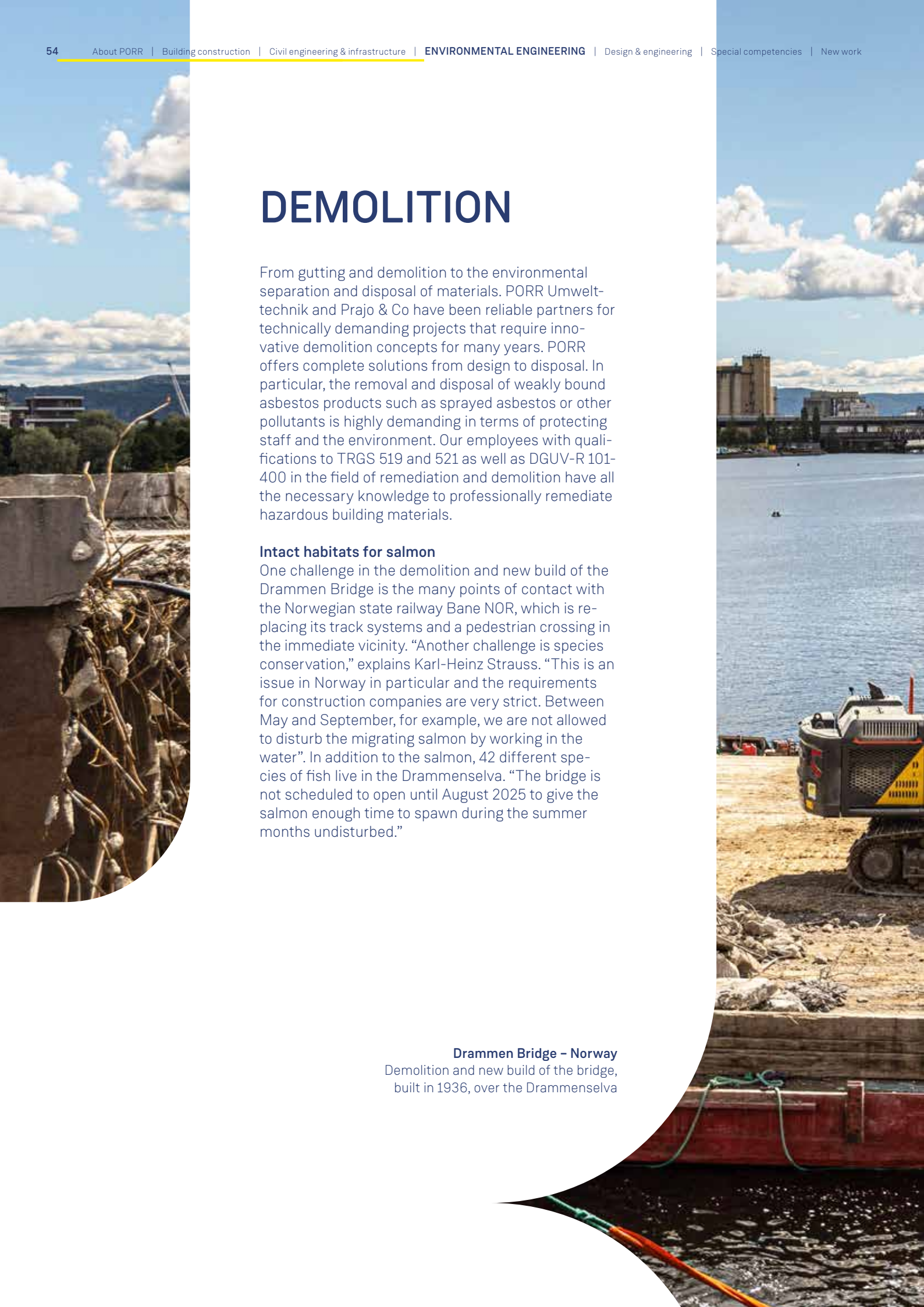
From gutting and demolition to the environmental separation and disposal of materials. PORR Umwelt-technik and Prajo & Co have been reliable partners for technically demanding projects that require innovative demolition concepts for many years. PORR offers complete solutions from design to disposal. In particular, the removal and disposal of weakly bound asbestos products such as sprayed asbestos or other pollutants is highly demanding in terms of protecting staff and the environment. Our employees with qualifications to TRGS 519 and 521 as well as DGUV-R 101-400 in the field of remediation and demolition have all the necessary knowledge to professionally remediate hazardous building materials.

## Intact habitats for salmon

One challenge in the demolition and new build of the Drammen Bridge is the many points of contact with the Norwegian state railway Bane NOR, which is replacing its track systems and a pedestrian crossing in the immediate vicinity. “Another challenge is species conservation,” explains Karl-Heinz Strauss. “This is an issue in Norway in particular and the requirements for construction companies are very strict. Between May and September, for example, we are not allowed to disturb the migrating salmon by working in the water”. In addition to the salmon, 42 different species of fish live in the Drammenselva. “The bridge is not scheduled to open until August 2025 to give the salmon enough time to spawn during the summer months undisturbed.”

## Drammen Bridge – Norway

Demolition and new build of the bridge, built in 1936, over the Drammenselva





**PORT**





**Rems construction waste landfill  
and recycling plant – Austria**

State-of-the-art storage for  
numerous types of waste



## LANDFILL OPERATIONS

Together with two of its subsidiaries, Koller Transporte-Kies-Erdbau GmbH and Altlastensanierung und Abraumdeponie Langes Feld GmbH, PORR Umwelttechnik operates several landfills for mineral waste in Vienna, Lower Austria and Upper Austria. Numerous types of waste are stored there using state-of-the-art landfill technology. Thanks to the diversity of our facilities, we offer environmentally friendly and legally compliant disposal for every type of landfill.

**Remediation of contaminated site  
K20 in Brückl/Carinthia – Austria**

Safe long-term handling of  
hazardous substances







# REMEDIATION OF CONTAMINATED SITES

The remediation of the K20 contaminated site in the Carinthian market town of Brückl demonstrates PORR's broad range of services in the field of environmental cleanup. The blue lime landfill was long regarded as one of the most dangerously contaminated sites in the country and was made safe by PORR Umwelttechnik GmbH (clearing, loading, disposal, drilling and earthworks as well as the construction of parts of the groundwater purification plant and the soil vapour extraction system). PORR Bau GmbH was responsible for constructing the enclosing diaphragm sealing wall to secure the contaminated site and PORR subsidiary IAT GmbH was responsible for the multifunctional surface sealing. Today, thanks to PORR, the air and water in Brückl are once again free of pollutants.







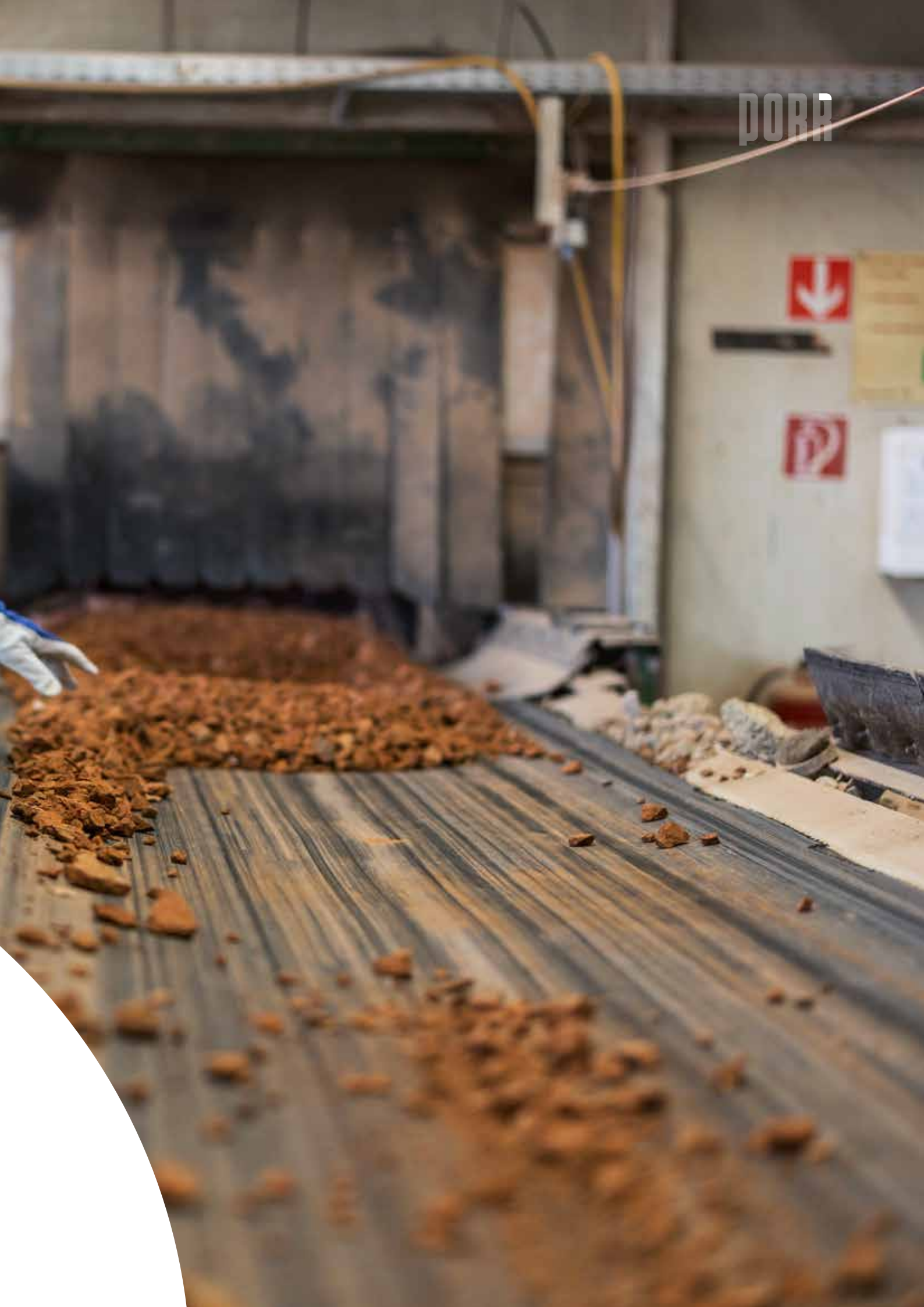
**Recycling centre Himberg/Lower Austria – Austria**  
Environmental processing of construction waste

## WASTE MANAGEMENT

The construction industry is one of the most resource-intensive business sectors in the world. That's why we consider ourselves obligated to promote the sustainable use of our raw materials. For example, we operate two recycling plants in Himberg and Graz-Pirka, where we crush, sort, classify and wet-process mineral construction waste to produce high-quality recycled products that can be reused in the interests of a sustainable circular economy. PORR operates a total amount of 17 recycling plants as well as mobile recycling plants for construction sites in Austria.



DORR







**Flood retention basin Fahrafeld/Lower Austria – Austria**  
Earthworks at the largest retention basin in Lower Austria

## EARTHWORKS

From smaller excavation works to earthworks for various building construction and civil engineering projects to material deliveries and disposal – PORR's earthworks portfolio is comprehensive. What makes it special? All services are provided as a one-stop shop and with maximum utilisation of our inhouse value add. This applies not only to the work on the construction sites, but also to the transport services that we provide with our fleet of vehicles. Our expertise in earthworks is utilised not least in highly complex construction projects for major infrastructure operators such as ÖBB or Wiener Linien.



# GRAVEL PRODUCTION

Koller Transporte-Kies-Erdbau GmbH, a subsidiary of PORR Umwelttechnik GmbH, has been operating a highly efficient gravel washing plant with a capacity of 300,000 tonnes per year since 2010. It produces almost every grain size from 0.063 to 63 millimetres. The ultra-modern plant makes it possible to cater to individual customer requirements. Thanks to an optimised water circuit, up to 95% of the process water is recirculated – without the addition of any additives. This means that we not only work very economically, but also in a way that is as environmentally friendly as possible.

**Recycling centre Himberg/  
Lower Austria – Austria**

Environmentally friendly and economical  
gravel production in Lower Austria

**PORR**









**BUILT TO  
INNOVATE.**

**DESIGN &  
ENGINEERING**

General planning  
Building certification  
LEAN management  
Building Information Modelling (BIM)  
Fire protection  
Architecture  
Technical building services planning  
Structural design  
Building preparation  
Construction supervision







# DESIGN & ENGINEERING

Digitalisation is fast becoming a tangible reality. Our lives are becoming ever more interconnected, both privately and professionally. The construction site of the future is becoming increasingly paperless as well. This also opens doors to new construction methods.

Analogue values are becoming digital – on the construction site as well as in the office. Those who want to handle projects efficiently and successfully in the future don't just have to accept digital working methods. They need to make them part of the initial design and integrate them into all processes. Building Information Modelling (BIM) is especially important here. It is the prerequisite for optimised collaboration from planning to completion.

Technologies that change construction processes: PORR develops and tests new solutions in many areas. For example, in robotics and process automation. A robot that cuts window and door openings autonomously is currently being tested. Or a crane hook that can identify construction materials using RFID codes. PORR is also working on digitising the supply chain through innovative IT solutions such as Sequello, DigiTun and ISHAP, as well as on increasing efficiency, for example through the group-wide rollout of iTwo in construction management. We are also testing alternative drives for our machinery.

That said, innovations like these do not happen overnight. They involve a continuous, multi-year process for which the people on the construction site must be sensitised and trained.

**Wien Museum – Austria**  
Highest efficiency through BIM & LEAN







#### Technical building services planning pde – BIM model Raiffeisencorner

A one-stop shop for planning services with  
an integrated approach to general planning

## GENERAL PLANNING

PORR is more than just an integrated general planner: As a multi-engineering company, we pursue an interdisciplinary approach in which we consider all planning steps in a networked manner and across the entire life cycle of a building. The specialist areas of architecture, building physics, structural engineering, technical building services, construction preparation and supervision as well as fire protection are seamlessly interlinked and these experts work together to find effective, economical and sustainable solutions for our clients.



# BUILDING CERTIFICATION

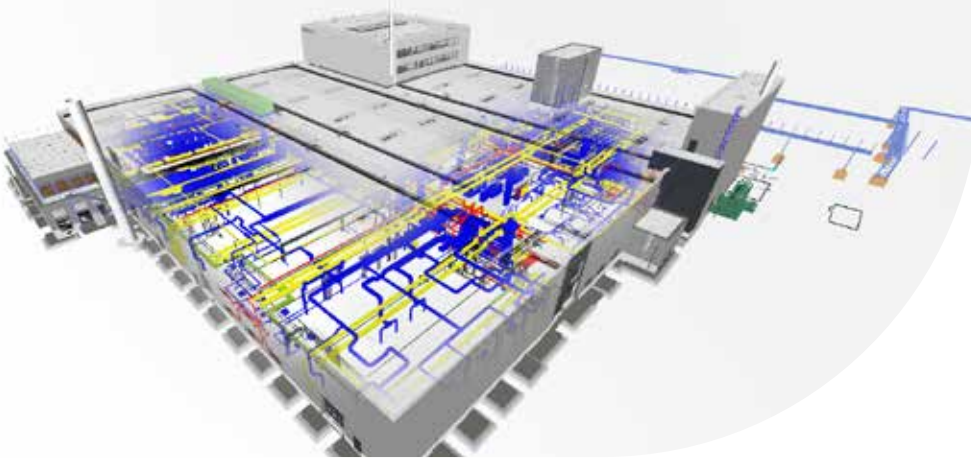
At Innsbruck's main railway station, PEMA 3 is a sustainable multifunctional building with completed hotel and office space. The project, realised by pde Integrale Planung in a consortium, is pre-certified to LEED Gold standard. Building certification systems offer recognised procedures for minimising the use of resources and emissions without compromising building comfort. PORR has more than ten years of experience in the field of building certification and has specially trained staff with a wealth of expertise. We plan in accordance with recognised building guidelines and are proactively involved in the further development of leading building certification systems such as LEED, BREEAM and the core system of the Austrian Sustainable Building Council (ÖGNI).



**PEMA 3 Innsbruck – Austria**  
Awarded the seal of quality for  
sustainable buildings







**Heraeus HQS 191 – Germany**  
Building services planning as  
general contractor

## BIM AND LEAN

The highest quality, optimised construction time, lower costs. BIM and LEAN management enable the smooth exchange of data and information between the people involved. With BIM 5D, everyone involved works on a digital building model that also considers the dimensions of time and cost. With LEAN methods, any potential waste is jointly and continuously avoided before it happens and all work steps are analysed in advance. This increases the added value in the process.

pde Integrale Planung combines many years of experience in the classic planning trades with the use of these innovative working methods. As an integrated planner, pde guarantees support throughout the entire product life cycle, even for construction projects with demanding technological, architectural and time constraints. Integrated planning is also synonymous with close cooperation within the framework of general planning as well as with the expert teams in the upstream and downstream planning and execution phases.

Heraeus commissioned us to build the highly complex clean room factory and handle the subsequent planning of the clean room and technical building services as general contractor. The client has high demands for its production facility and we were able to deliver thanks to our many years of experience and expertise.



### LEAN weekly planning

Streamlined processes and  
increased value add with the  
LEAN method

### **PORR's LEAN record on the Koralm Tunnel**

From 17.87 to 5.52 working hours – the PORRians set this speed record on the Koralm Tunnel project with the PORR LEAN team. Using a LEAN management method, the construction site team optimised the processes together, making them motivated to deliver top performance. Every minute counts on a construction site. Using the KAT3 construction section of the Koralm Tunnel as an example, PORR has shown how extraordinary measures can overcome construction hurdles, what employees can achieve on the construction site, and the enthusiasm with which they can do so.

### **BIM model of the Koralm Tunnel**

Innovative and forward-looking working methods for Austria's longest railway tunnel (32.9 kilometres)







BUILT TO  
**CREATE.**

## **SPECIAL COMPETENCIES**

High Alpine construction  
Asphalt and concrete production  
Facade construction  
Airport construction  
Waterproofing  
High-rise construction  
Slab Track Austria  
Concrete slab construction  
Facility management  
Mastic asphalt  
Healthcare  
Public Private Partnerships (PPP)  
Property management  
Steel construction





# SPECIAL COMPETENCIES

With highly complex construction projects, it is even more important to use a one-stop shop. And PORR has 150 years of experience and expertise to draw on.

There is no type of bridge or road that PORR has not built. Tunnels through every type of rock, secure foundations for every structure, and patented rail-track systems are just as much a part of the service range as asphalt production, concrete construction, facade construction, high Alpine construction, high-rise buildings, steel construction, and facility and property management. PORR is known for its cost-effectiveness, efficient use of resources, optimised planning and execution as well as maximising benefits for all stakeholders. PORR's clients rely on comprehensive technical expertise in design and planning, implementation and ongoing project operations. The PORR team is passionately dedicated to complex and challenging tasks and develops trailblazing methods. It innovates new processes and solutions to meet particularly demanding requirements. Because with every new insight, every newly advanced technology and every project, PORR surpasses itself yet again.

## Runway refurbishment at Vienna Airport

Comprehensive know-how from decades of experience







## HIGH ALPINE CONSTRUCTION

“Generating electricity from hydropower is highly sustainable and free of emissions. With the construction of the new Limberg III power plant, we are realising a project that will safeguard the share of green electricity in Austria long term. Our comprehensive expertise in underground power plant construction, our own tunnelling skills and our experience in high alpine terrain make us the perfect partner”, says Karl-Heinz Strauss, CEO of PÖRR.

In high Alpine construction, PÖRR operates in extreme terrain, at high altitudes and under rapidly changing climatic conditions – and usually far away from resources such as concrete factories and building material stores. Whether cable cars, reservoirs, ski jumps, high mountain roads, snowmaking systems, piste construction or complex engineering structures high up in the mountains – PÖRR meets all these challenges and masters projects in Alpine terrain by applying many years of experience.

**Limberg III Kaprun/Salzburg – Austria**  
Sustainable boost for Austria's energy future





**Asphalt mixing plant  
Feistritz/Styria –  
Austria**

PORR's 29 mixing plants produce almost three million tonnes of asphalt every year

# ASPHALT AND CONCRETE PRODUCTION

## **Asphalt production**

The nationwide production of asphalt mixes is a top priority. In Austria alone, PORR operates 29 mixing plants and produces around three million tonnes of asphalt every year. In doing so, we make a significant contribution to maintaining Europe's road infrastructure.

## **Concrete production with lower footprint**

PORR produces around 700,000 cubic metres of concrete in its mixing plants with the greatest possible care for the environment. We use aggregates quarried and processed in an environmental way as the basis for our concrete. Through recycled building materials, Austrian quality cement, regional concrete additives, and short delivery routes, we are able to further protect resources and nature.



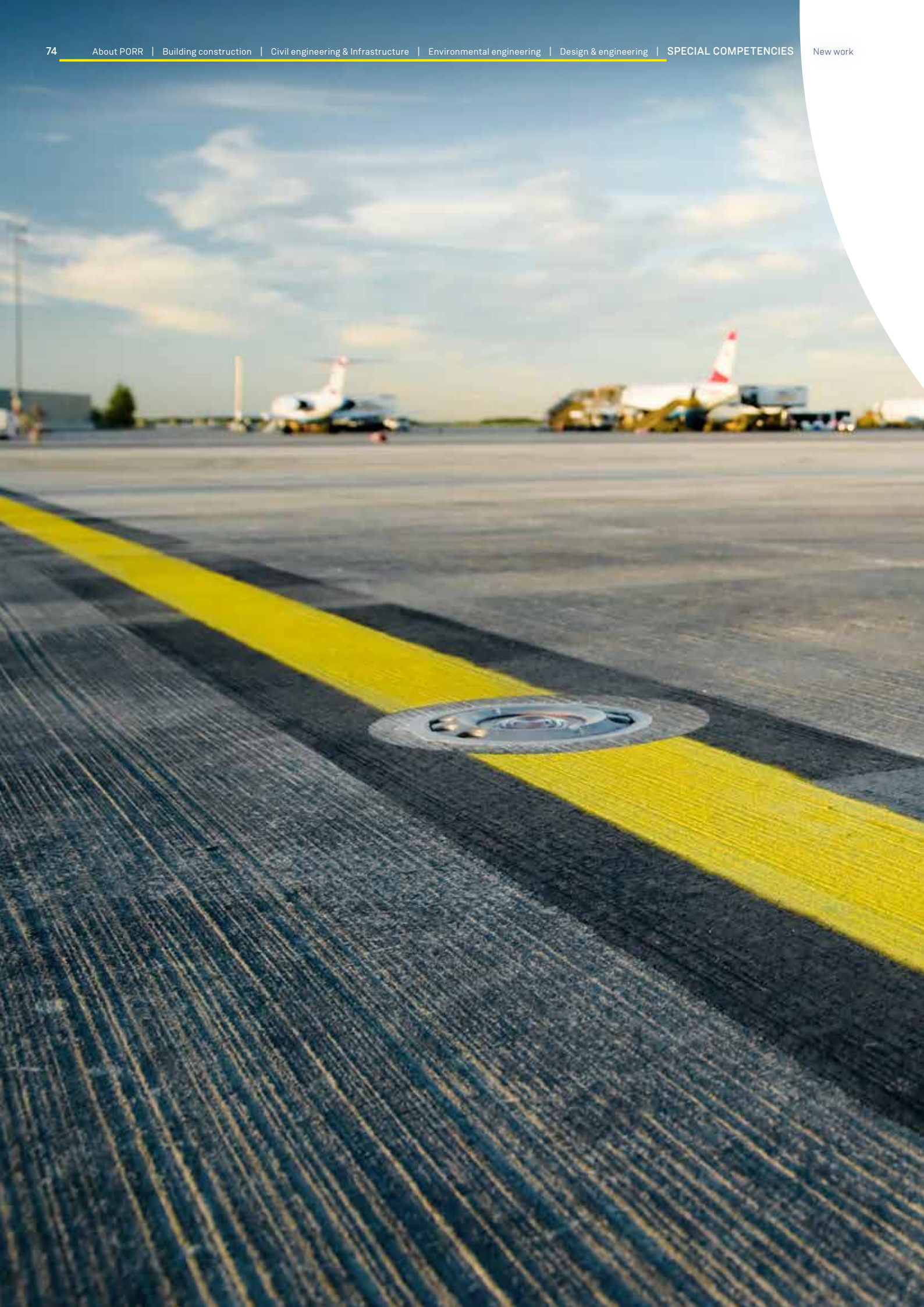
# FACADE CONSTRUC- TION

Technically perfect and aesthetically sophisticated facades make every building an attractive eyecatcher. With the specialist ALU-SOMMER, PORR offers its customers the best solutions in facade construction and design. The product portfolio ranges from simple windows to ready-to-install modular facades. Thanks to its inhouse development, customised planning, high level of vertical integration, and inhouse assembly, ALU-SOMMER can deliver even the most demanding facade as a turnkey premium product.

**Hotel Gilbert Vienna – Austria**  
Aesthetics and technology in harmony –  
with a lush flower meadow as a facade





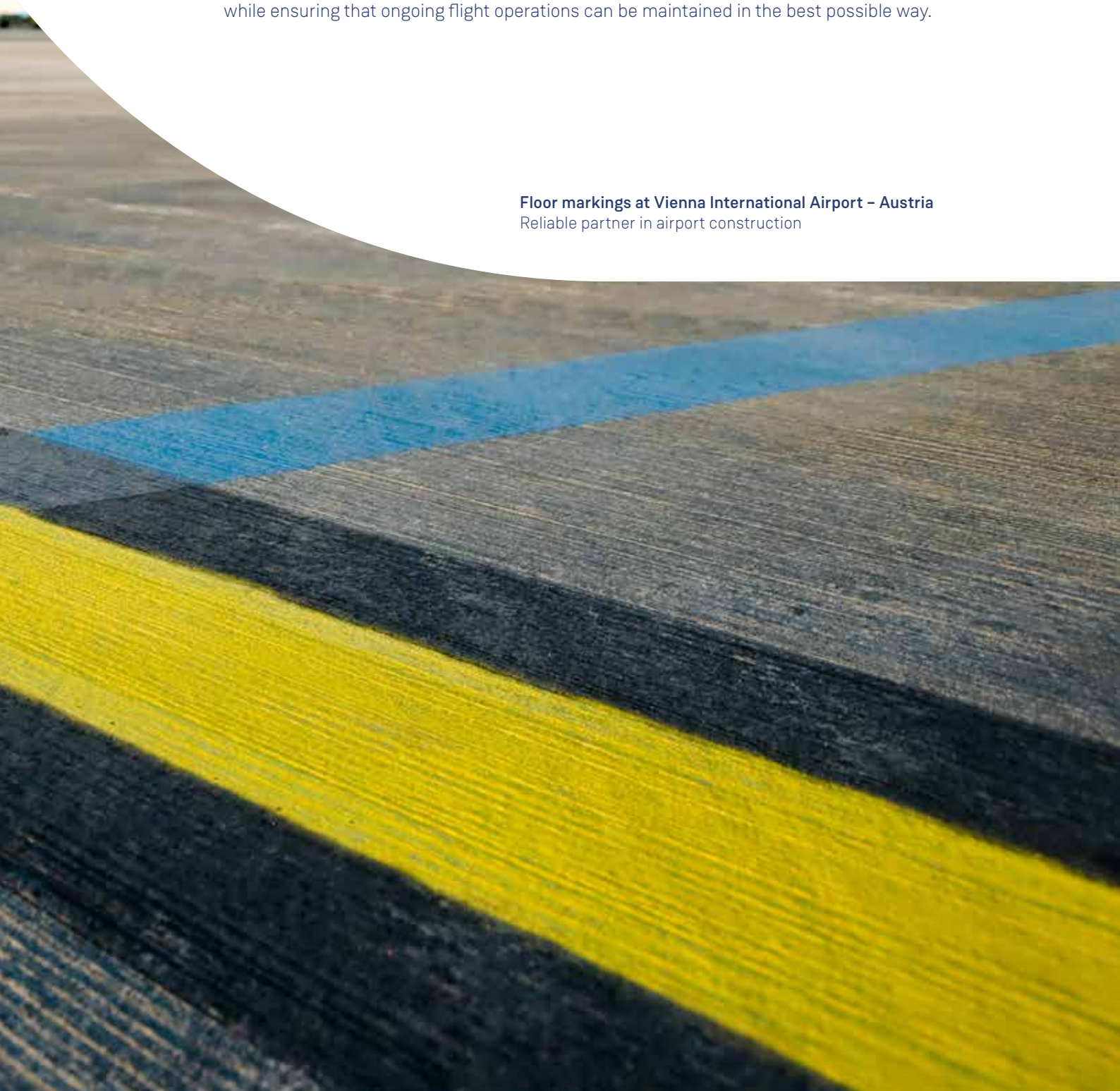




# AIRPORT CONSTRUCTION

In airport construction, PORR offers construction services for runways, aprons, taxiways, hangars, terminals and arrivals buildings from a single source. Our experts also plan and implement complex infrastructures such as shopping centres, hotels and multi-storey car parks. Thanks to decades of experience and comprehensive expertise, we meet all safety requirements and fulfil all country-specific standards. We also provide all services for refurbishment projects, under consideration of unrestricted passenger operations and while ensuring that ongoing flight operations can be maintained in the best possible way.

**Floor markings at Vienna International Airport – Austria**  
Reliable partner in airport construction









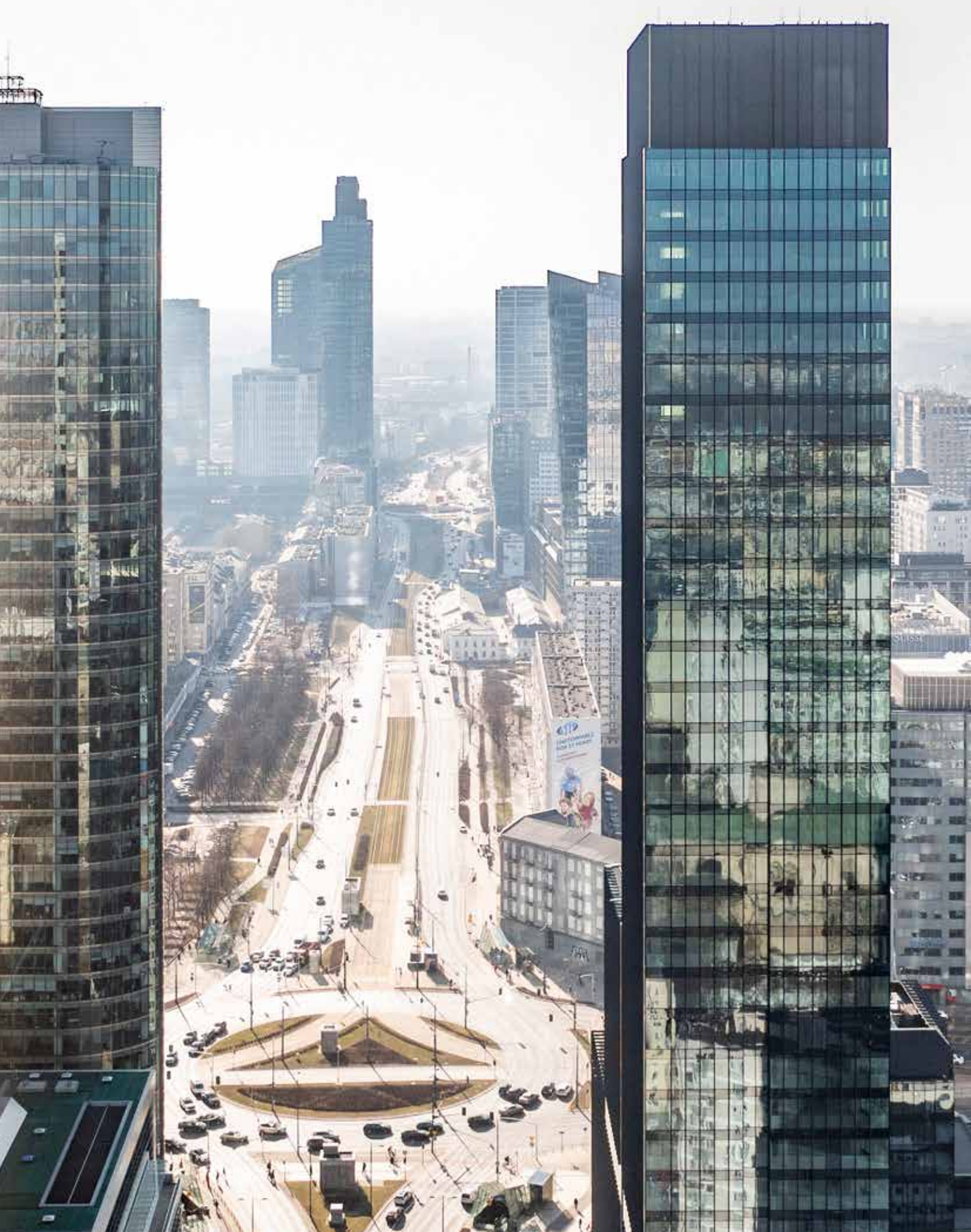
## WATERPROOFING

PORR's range of waterproofing services includes the insulation of bridges or buildings using bituminous materials as well as advanced plastics for sealing tunnels or reservoirs. In addition, our gardening and landscaping company IAT GmbH realises durable roof fillings and attractive green roofs. PORR supplies sustainable waterproofing solutions as a one-stop shop.

Whether high-performance asphalt or bridges at central transport hubs: PORR's range includes emulsions, polymer-modified bitumen, mastic asphalt, hot asphalt, low-temperature asphalt and cold asphalt based on renewable, environmentally friendly raw materials. Our experts in bituminous road construction take individual framework conditions into account such as traffic load, environmental influences, the service life of the pavement and the life cycle costs of the materials, right from the planning phase.

**Sealing in the Koralm Tunnel – Austria**  
For sustainable quality and safety







# HIGH-RISE CONSTRUCTION

155 metres high, with 40 floors and 40,000 square metres of space – this is Skysawa, a sky-high tower in the heart of Warsaw. PORR built the office and commercial complex in the centre of the Polish capital in just 36 months. It also designed the entire construction process based on the principles of sustainable development. This is why the BREEAM (Building Research Establishment Environmental Assessment Methodology) assessment system, which originated in the UK, has awarded both parts of the building the highest interim certificate.

## **Skysawa Warsaw – Poland**

A sky-high tower built sustainably and in record time

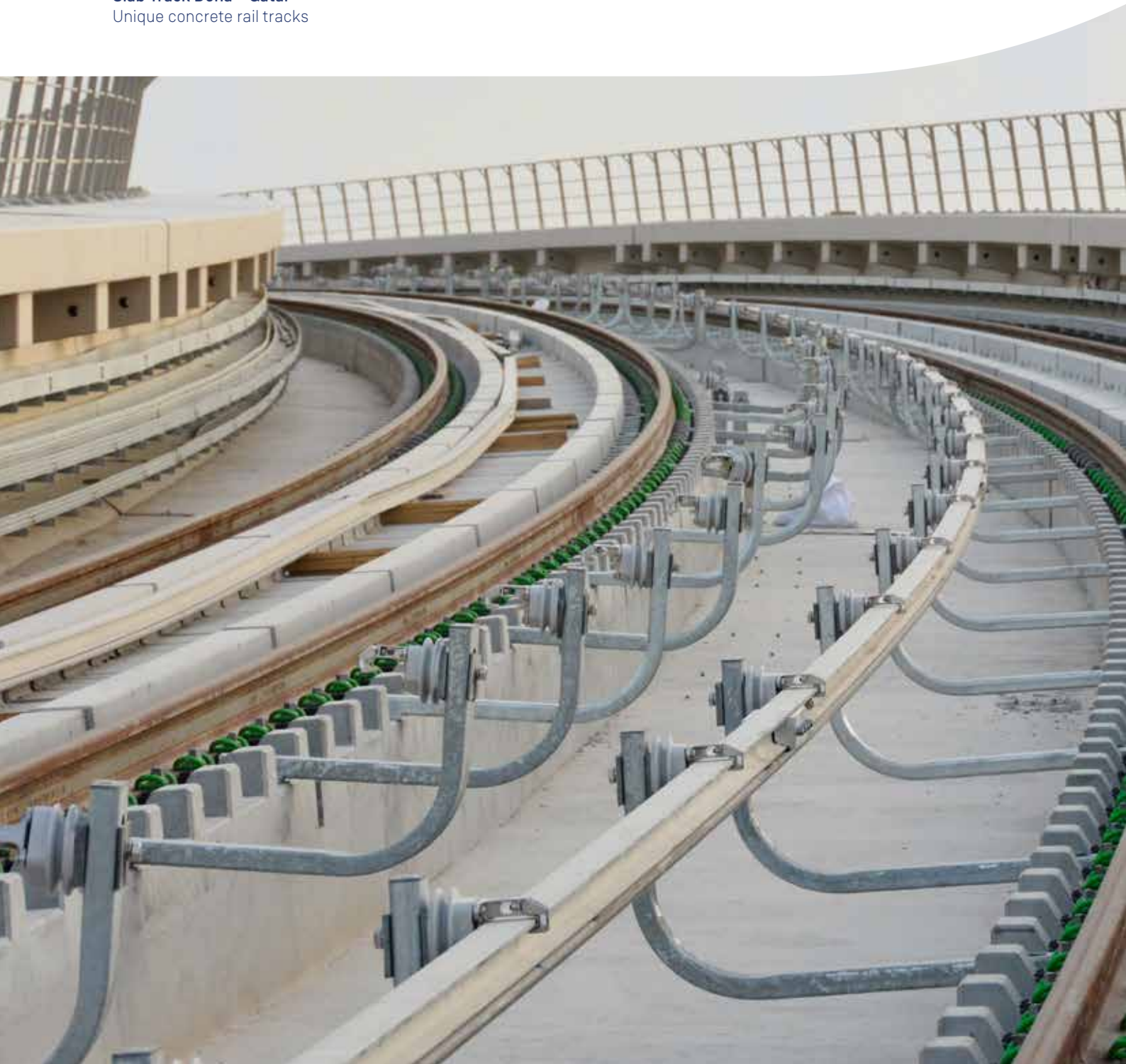




# SLAB TRACK AUSTRIA

With Slab Track Austria, we offer a unique and internationally sought-after technology for high-performance and high-speed railway lines – and it is state of the art. Jointly developed by PORR and ÖBB, the highly modular and highly adaptable “slab track” system meets highest demands for future-oriented railway construction and makes the rail transport of the future possible. Rail users in Europe, Asia and Australia already enjoy the highest level of travel comfort today. With our Slab Track Austria technology, for example, we have realised planned speeds of 400 km/h, integrated solutions for noise and vibration reduction, as well as providing protection against derailment and accessibility for emergency vehicles.

**Slab Track Doha – Qatar**  
Unique concrete rail tracks





**PORR**









BUILT TO  
**COLLABORATE.**

**NEW WORK**

Flexible world of work

Women@PORR

We@PORR





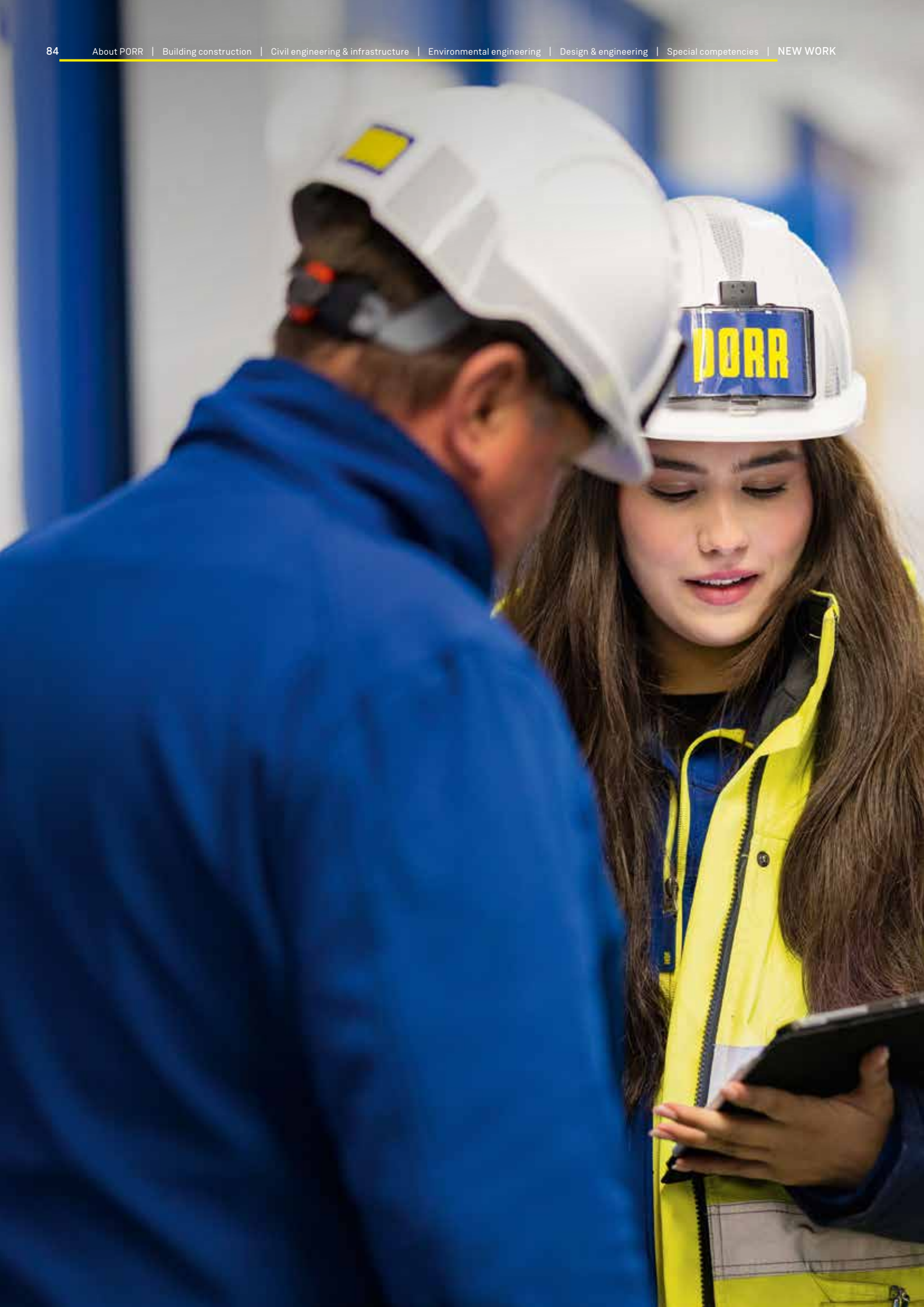
# NEW WORK

What counts most at PORR are the people – the PORRians. Because they are the ones who make PORR so unique and successful. In order to survive in the working world of the next generation, a company must be flexible and offer its employees ample opportunities.

The world of work is currently undergoing radical change. The main driver is digitalisation, but also the fact that people are increasingly demanding new forms of work. Work should create meaning and be more than just a job. People want to feel fulfilled and to grow professionally and personally. Today's offices increasingly offer flexible workplaces and are also communication centres. A mix of traditional and agile organisational structures is emerging. Rigid rules are being replaced by flexible working time models. The fixed workplace is being supplemented by options to work from home. Artificial intelligence is becoming part of the team. And holistic and networked thinking is required in addition to flexible and project-based working.

Companies must respond to this in an open, flexible and appreciative manner, with forward-looking concepts and well thought-out training and further education programmes. Especially in the construction industry, where the shortage of skilled labour poses a particular challenge. Because one thing never changes: People must always be at the heart of what we do. They are the key to success.





# FLEXIBLE WORLD OF WORK

PORR prioritises a work-fun balance and offers its employees many benefits that make their everyday working lives easier and less stressful:

- Flexible working such as flexitime, home office and educational leave on request
- Health requirements with our own company doctor, exercise and fitness rooms and the right to mental health support

## **PORR Care+**

Some countries offer the PORR Care+ group insurance model, which provides immediate financial assistance in the event of serious illness or death to support PORRians in every situation.

- For families: Adventure Camp, Kids Week and Kids Day as well as active parental leave management
- Company restaurants and meal allowances
- Car parks, company cars and even company apartments if required
- Numerous training and further education opportunities
- Social interaction is also catered for: Company events, celebrations and regular initiatives



## Women@PORR

PORR supports women and creates an environment that offers everyone the same opportunities and prospects. Global and local initiatives by Women@PORR ensure a more inclusive and better future for women in the world of work. To this end, PORR has signed the Women's Empowerment Principles (WEPs) of the UN Global Compact and UN Women and is constantly working to implement these principles even more effectively within the company. These include promoting enterprise development, gender equality and empowering women in what is partly a male-dominated industry.



DORR







## We@PORR

Employees are the foundation of a successful company. We@PORR is one of many building blocks for a safe, inclusive and appreciative environment. The aim is to create a healthy and sustainable working environment, which is why PORR has implemented initiatives on the following topics:

- Flexibility in the way individuals organise their lives
- Equal opportunities & equality
- Appropriate, fair remuneration
- Training and further education programmes
- Promoting diversity and inclusion within PORR
- Prevention of harassment and discrimination in the workplace
- Ensuring the health and safety of our employees
- Health promotion and prevention
- Respect and upholding human rights along the entire value chain
- Our employees' commitment to charitable ventures

DOOR





**Media proprietor**

PORR AG  
1100 Vienna, Absberggasse 47  
T +43 50 626-0  
[office@porr-group.com](mailto:office@porr-group.com)  
[porr-group.com](http://porr-group.com)

**Concept and design**

kraftwerk | Agentur für neue Kommunikation  
1070 Vienna, Burggasse 28-32  
[kraftwerk.co.at](http://kraftwerk.co.at)

Errors and omissions excepted



## Photos

Michael Nowy (Wien Museum – p. 8-9; DC Tower II Vienna – p. 50) PORR (Design & planning – p. 10; Construction site – p. 11; PORR Salzburg office – p. 10-11; Demolition – p. 11; PORRians – p. 16-17; PORRians – p. 18-19; Świnoujście LNG terminal, Poland – p. 26-27; Mercator One Duisburg – p. 28; Raiffeisen Arena Linz – p. 30-31; Pomeranian University Hospital Szczecin – p. 32; Inn combined power plant – p. 36-37; Pacejov railway station Czech Republic – p. 44-45; Koralm Tunnel drill head – p. 46; U5 Europaviertel Frankfurt am Main – p. 47; Drammen Bridge Norway – p. 54-55, Rems construction waste disposal and recycling plant – p. 56-57; Remediation of contaminated site K20 in Brückl/Carinthia – p. 56-57; Himberg recycling centre/ Lower Austria – p. 58-59; Wien Museum Vienna – p. 62-63; Heraeus HQS 191 Germany – p. 66; LEAN weekly planning & BIM model Koralm Tunnel – p. 66-67; Vienna Airport runway resurfacing – p. 68-69; Limberg III Kaprun/Salzburg – p. 70-71; Feistritz/Styria asphalt mix plant – p. 72; Hotel Gilbert Vienna – p. 73; Ground marking at Vienna Airport – p. 74-75; Skysawa Warsaw – p. 78-79; Slab Track Metro Doha/Qatar – p. 80-81; Construction site m/w – p. 84-85; Woman@PORR – p. 86-87; We@PORR – p. 88-89, Construction site – p. 90) Astrid Knie (Austrian Parliament – p. 11; Executive Board photo shoot 2023 – p. 12-13; Wien Museum Vienna – p. 24-25; Building services planning pde BIM model Raiffeisencorner – p. 64; Office New Work – p. 82-83) Liebherr/fotowerkstatt.at (Seestadt Aspern – p. 18) Tomáš Malý (Supreme Audit Office Czech Republic – p. 22-23; Flood retention basin Fahrafeld/Lower Austria – p. 60) Roman Keller (Franklinturm Zurich – p. 29) Michaela Seidl Photography (Rehab centre Münster/Tyrol – p. 32) Expressiv (KinderKunstLabor St. Pölten – p. 33) Arnim Kilgus (Filder Tunnel – p. 34-35) Gregor Hartl Photography (Danube Bridge Linz – p. 38-39) Luca Greinecker (Bludenz junction – p. 40-41) Sulyok Imaging (Railroad line Gradistea – S. 42-43) L. Malkiewicz (Gdansk breakwater – p. 48-49) Valentin Luthiger Fotografie (Muotathalerstrasse Gibelhorn expansion/Switzerland – p. 51) Outline Pictures (Dantermühl power plant – p. 52-53); (Himberg/ Lower Austria – p. 61) Eldar Tinjic (PEMA 3 Innsbruck – p. 65) Harry Schiffer Photodesign (Koralm Tunnelling – p. 76-77)



